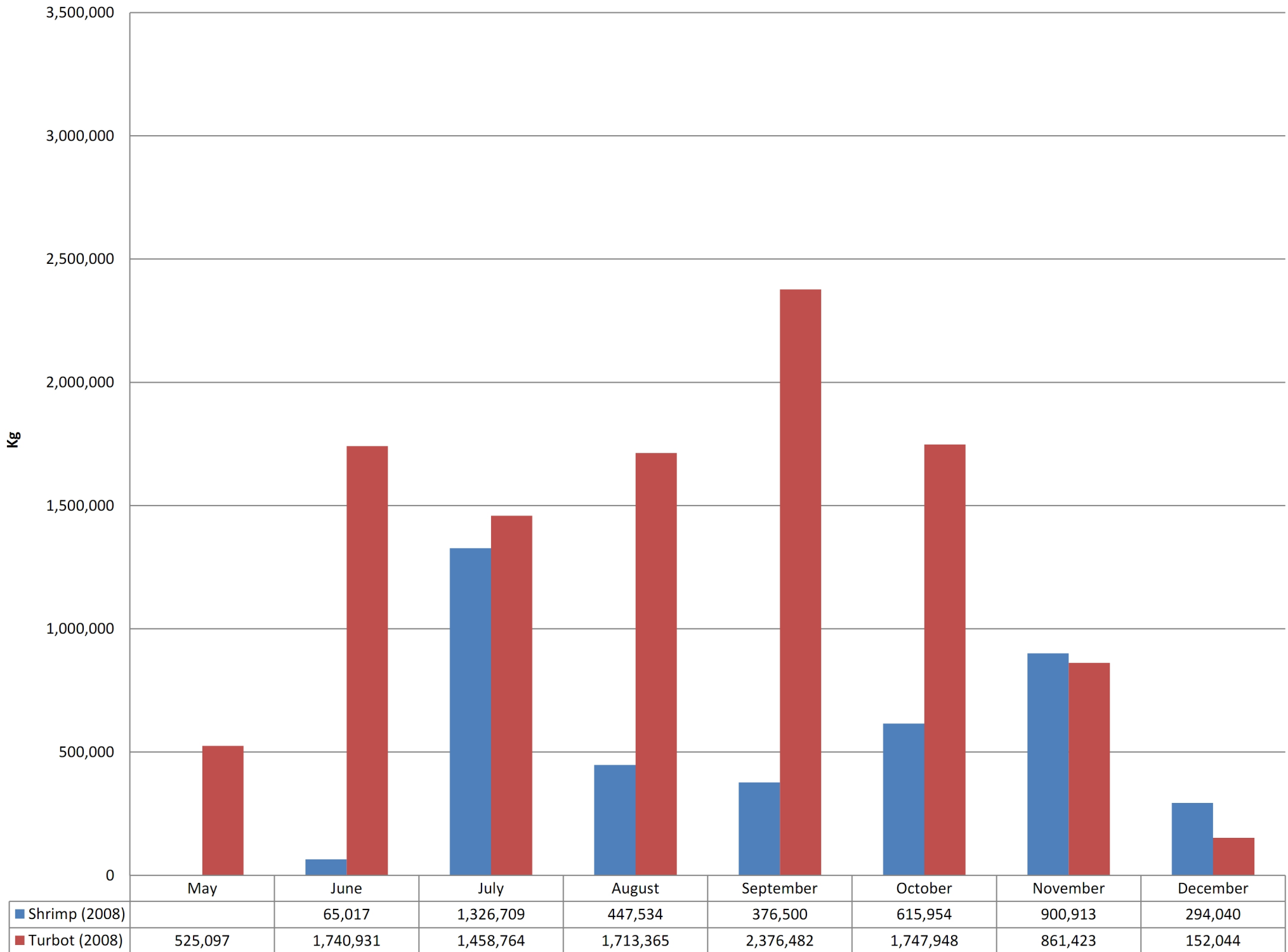
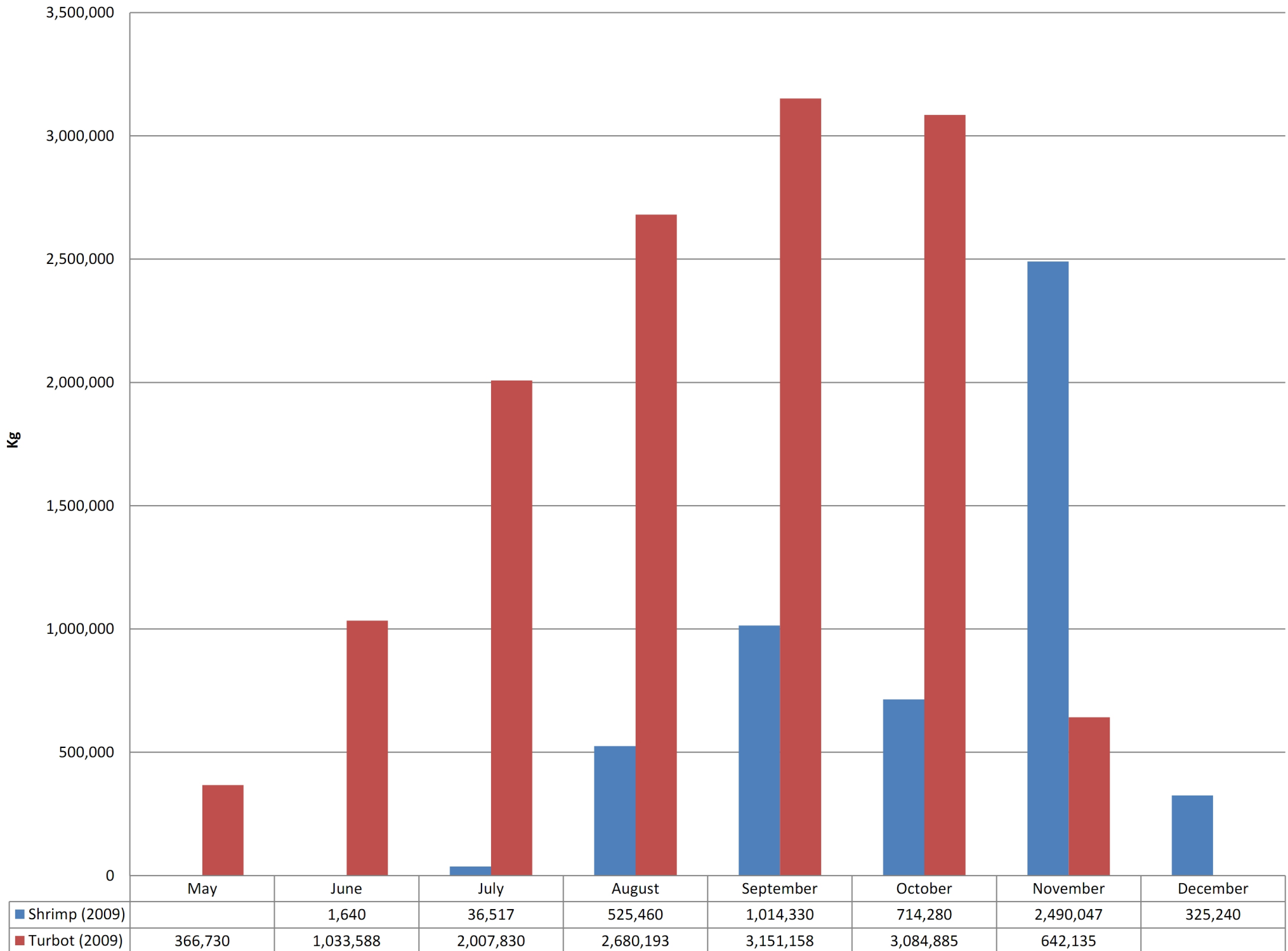


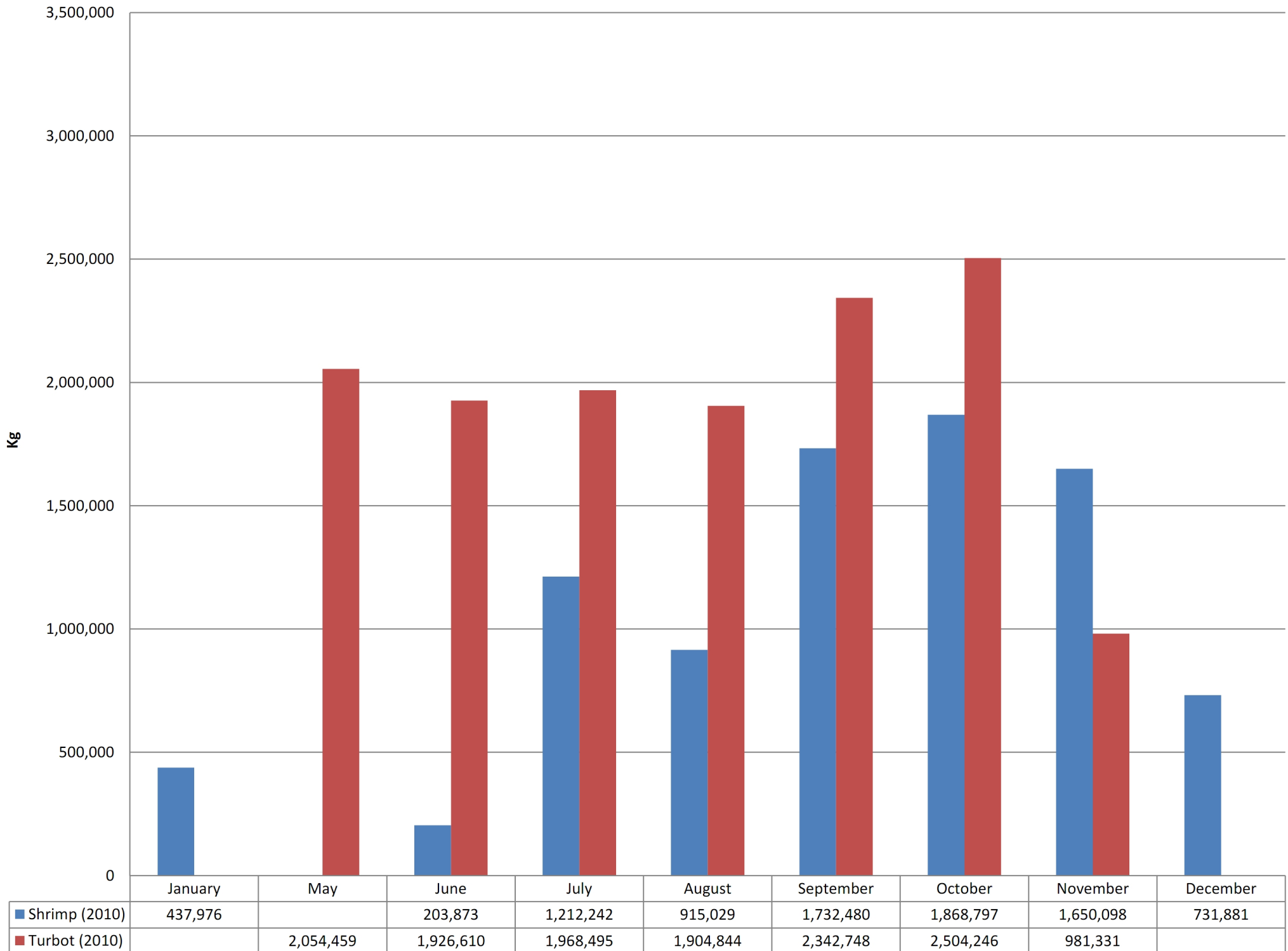
2008 Shrimp and Turbot Harvest



2009 Shrimp and Turbot Harvest



2010 Shrimp and Turbot Harvest



December 12, 2012

Mr. Kyle Sherwin
National Energy Board
444 Seventh Avenue SW
Calgary, Alberta
T2P 0X8

Dear Sir:

RE: TGS NOPEC Geophysical Company ASA, Petroleum Geoservices and MultiKlient Invest (TGS/PGS/MKI) NorthEastern Canada 2D Seismic Exploration Survey National Energy Board Information Request No. 1

Subject: Nunavut Government-NEB Request No. 1

On 23rd February 2012, MKI sent responses to National Energy Board from Information Request No. 1. The comment below was made by the NG and the MKI response indicated that fisheries maps would be updated and provided to the NG.

***Comment:** 4.9 Commercial Fishing: location maps from 2006-2007 for Turbot and Shrimp are out of date. Please provide an update of the current fishing area data.*

***MKI Response:** Updated fisheries maps will be provided to the Nunavut government.*

In keeping with our commitment, attached please find copies of the updated maps. Maps of Shrimp and Turbot fisheries from 2008, 2009, and 2010 are attached; however, data provided from 2011 was incomplete at the time of preparation and so are not included here.

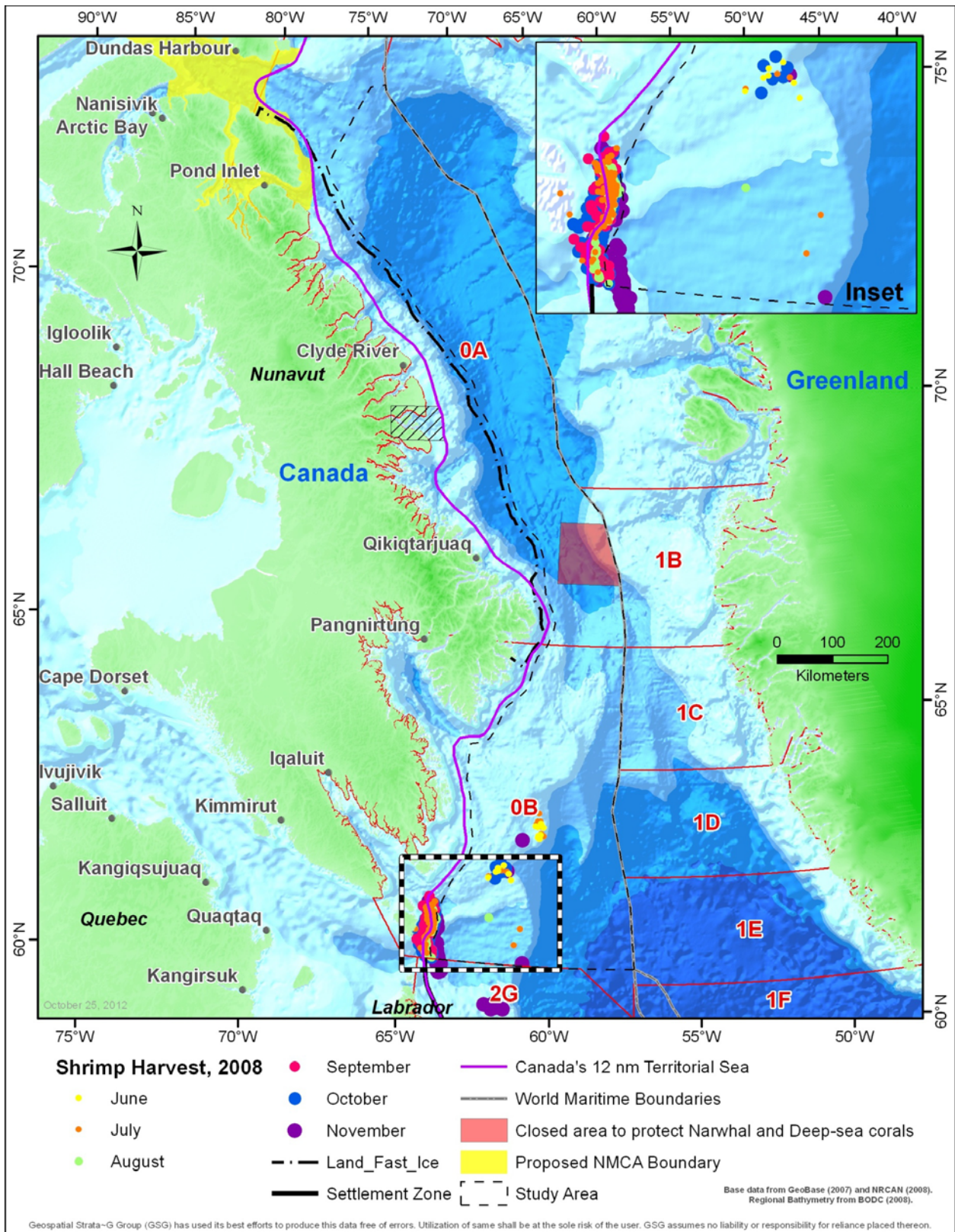
If you require anything further, please do not hesitate to contact me.

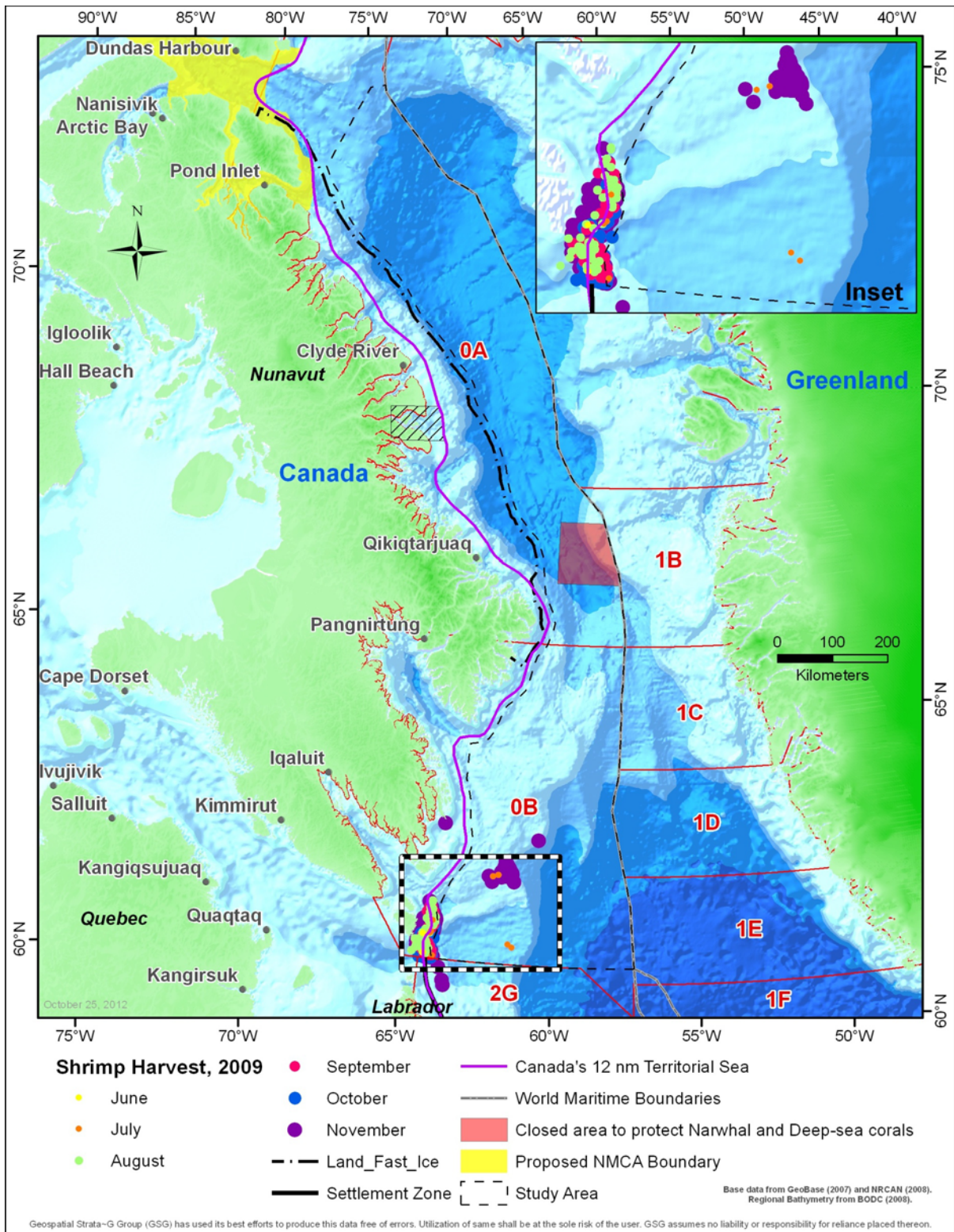
Yours truly,

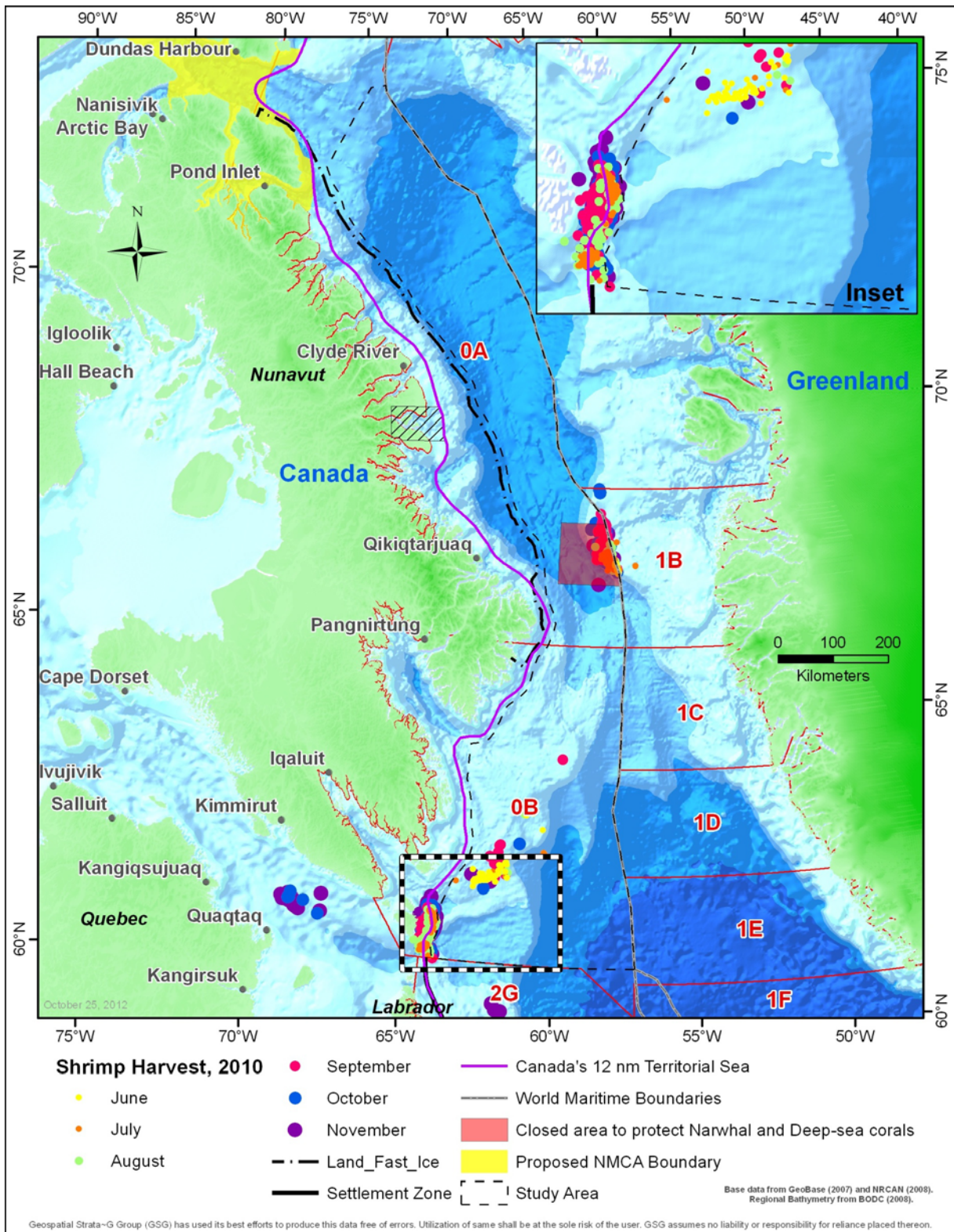


Darlene Davis
RPS Energy Canada Ltd.
Canadian Lead Consultancy

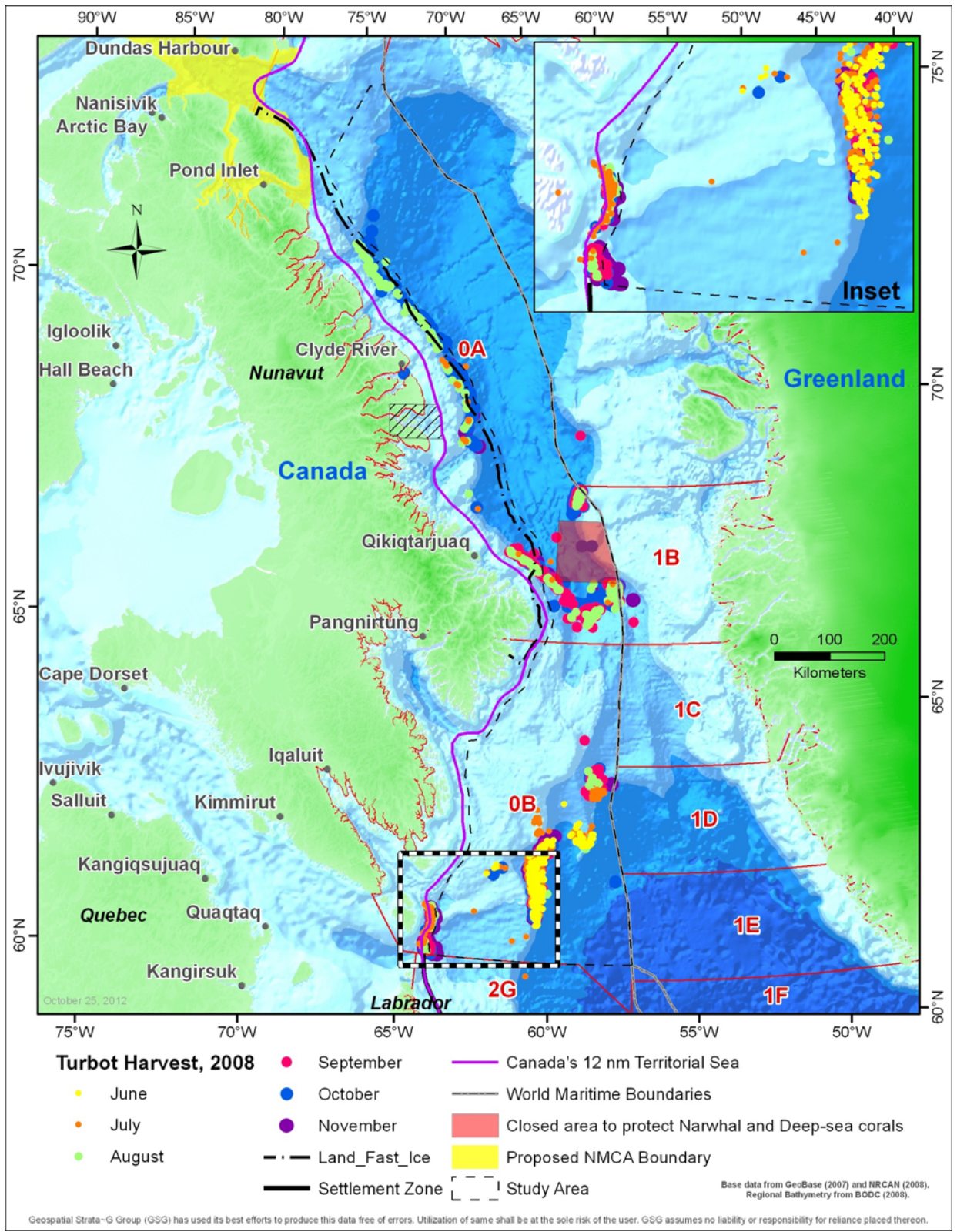
Shrimp Harvest (2008-2010)

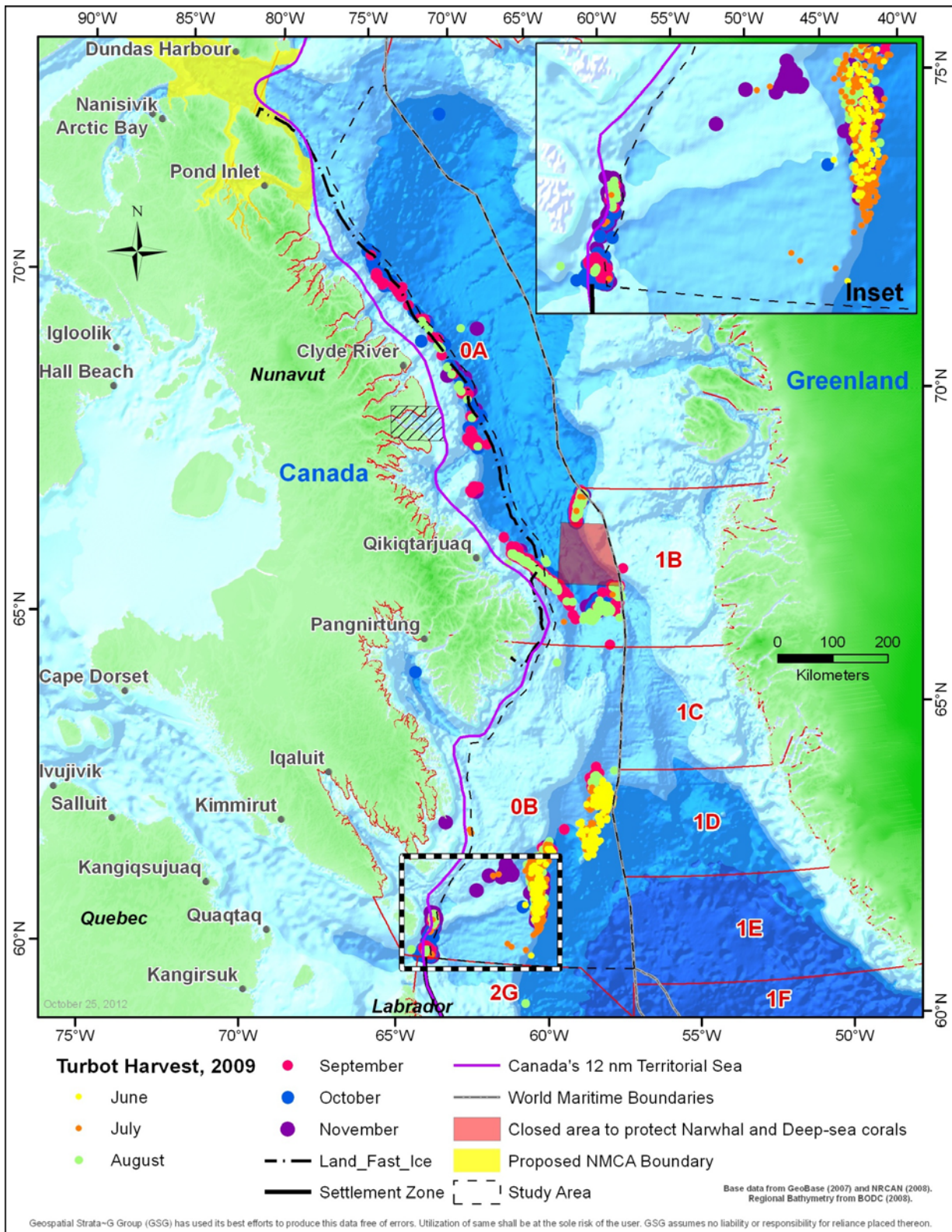


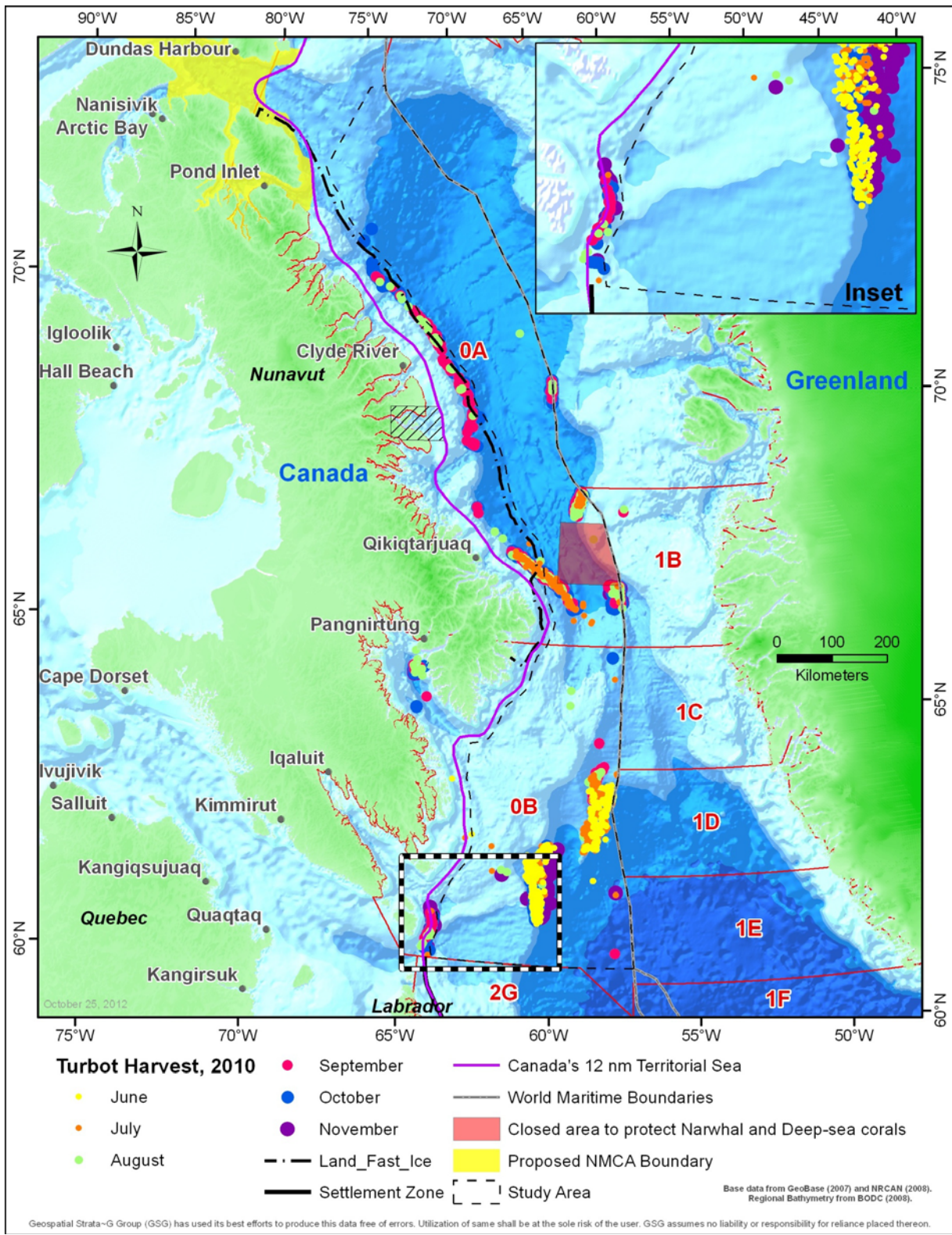




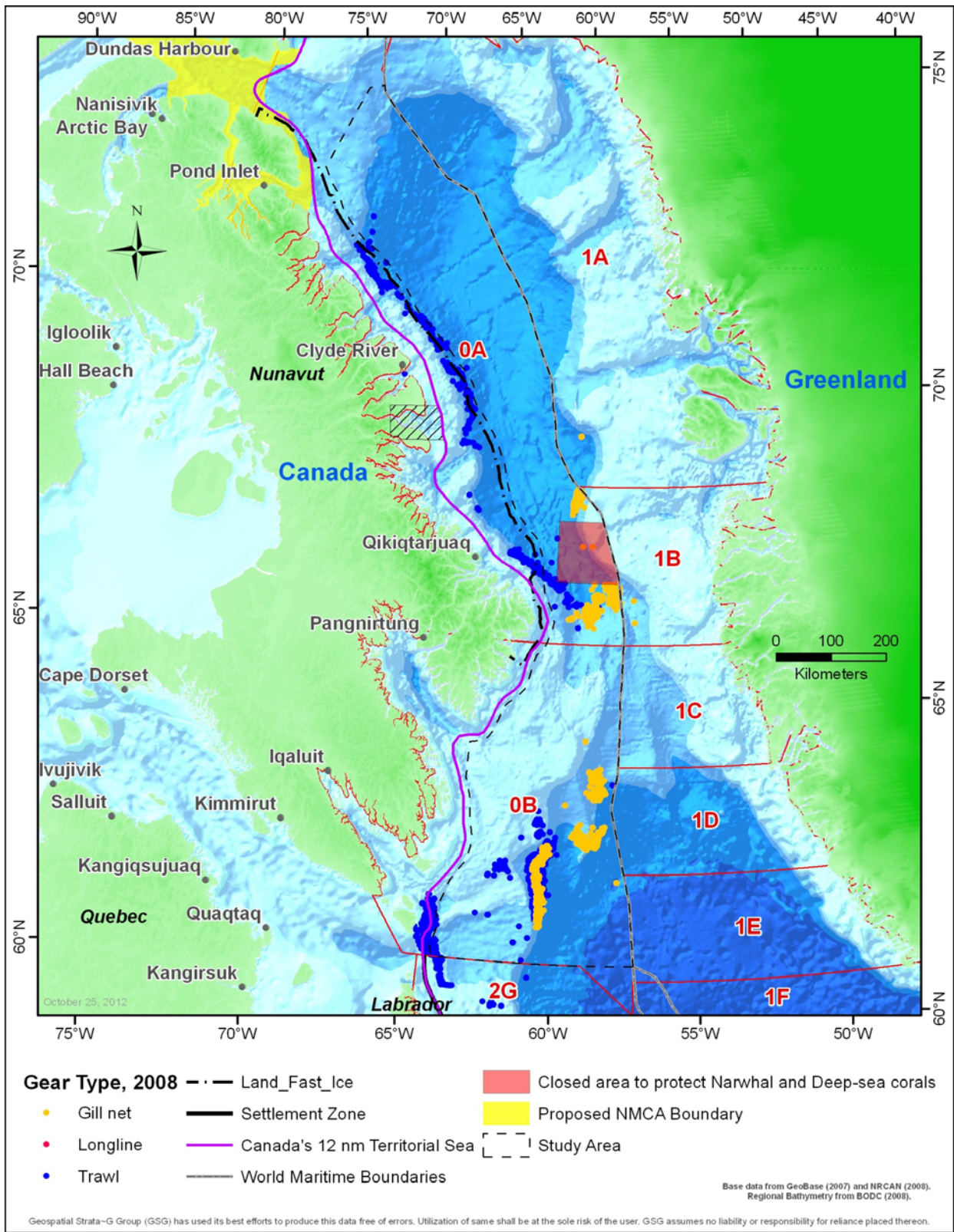
Turbot Harvest (2008-2010)

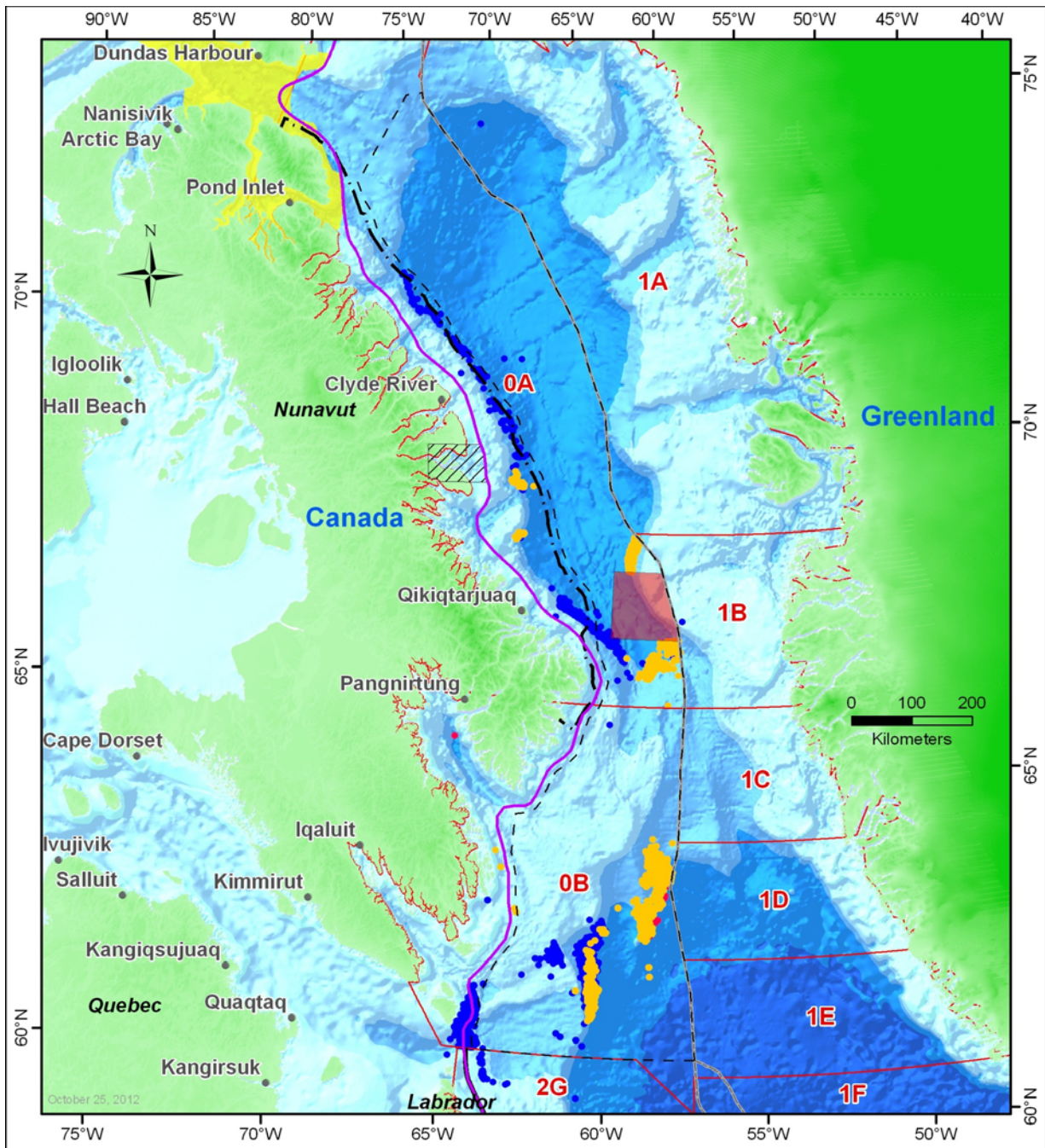






Gear Type (2008-2010)



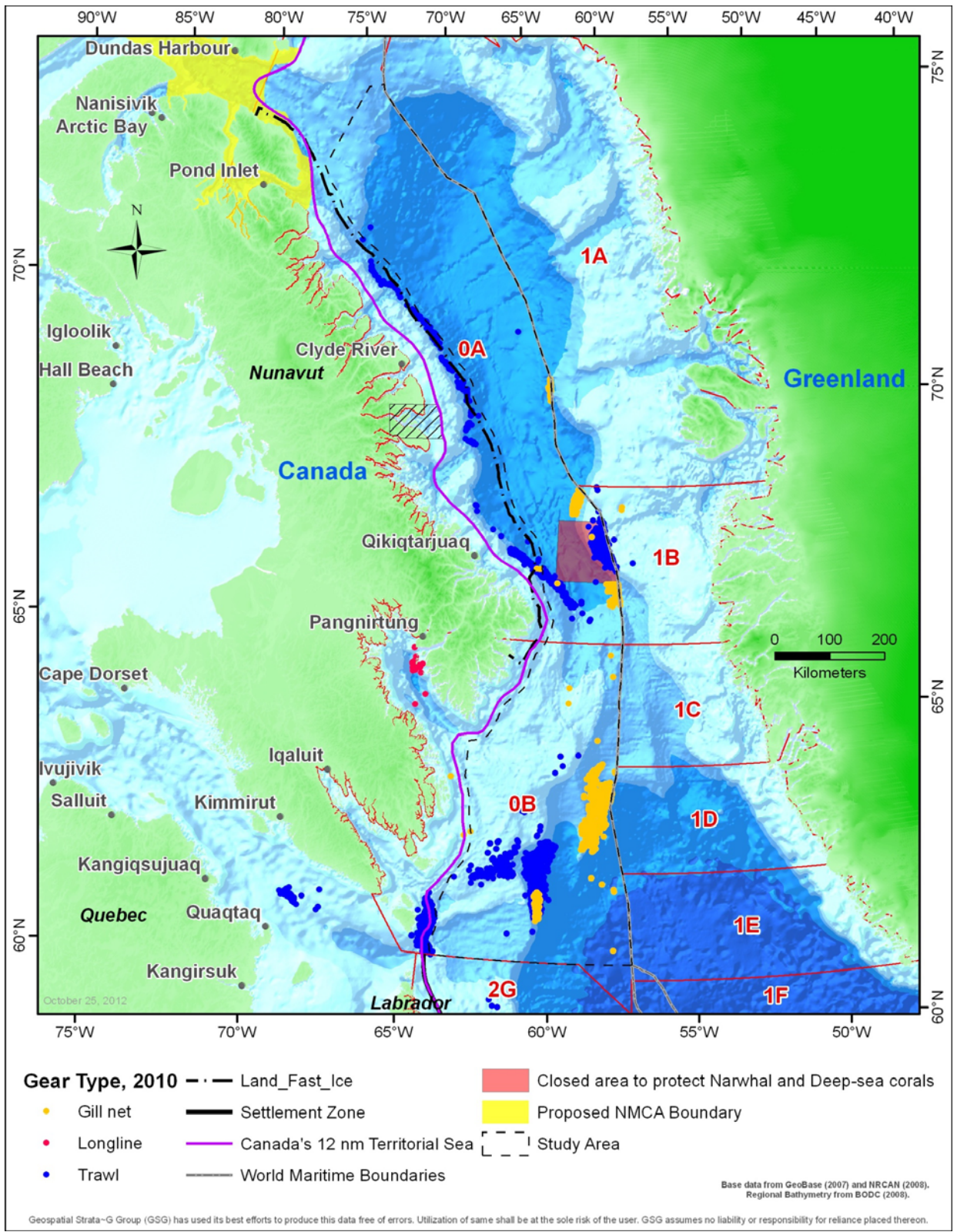


Gear Type, 2009

- Gill net
- Longline
- Trawl
- Land_Fast_Ice
- Settlement Zone
- Canada's 12 nm Territorial Sea
- World Maritime Boundaries
- Closed area to protect Narwhal and Deep-sea corals
- Proposed NMCA Boundary
- Study Area

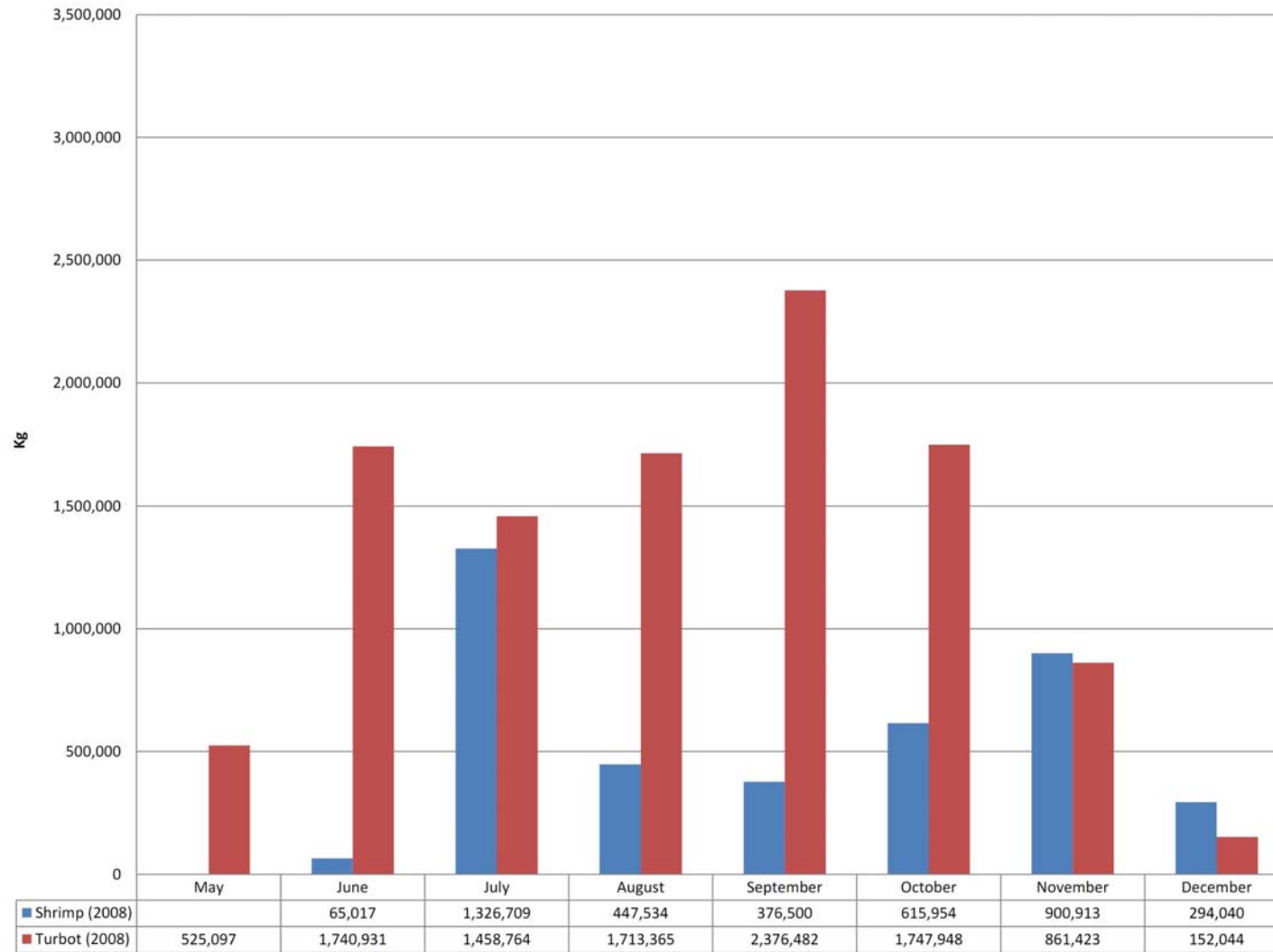
Base data from GeoBase (2007) and NRCAN (2008).
Regional Bathymetry from BODC (2008).

Geospatial Strata-G Group (GSG) has used its best efforts to produce this data free of errors. Utilization of same shall be at the sole risk of the user. GSG assumes no liability or responsibility for reliance placed thereon.

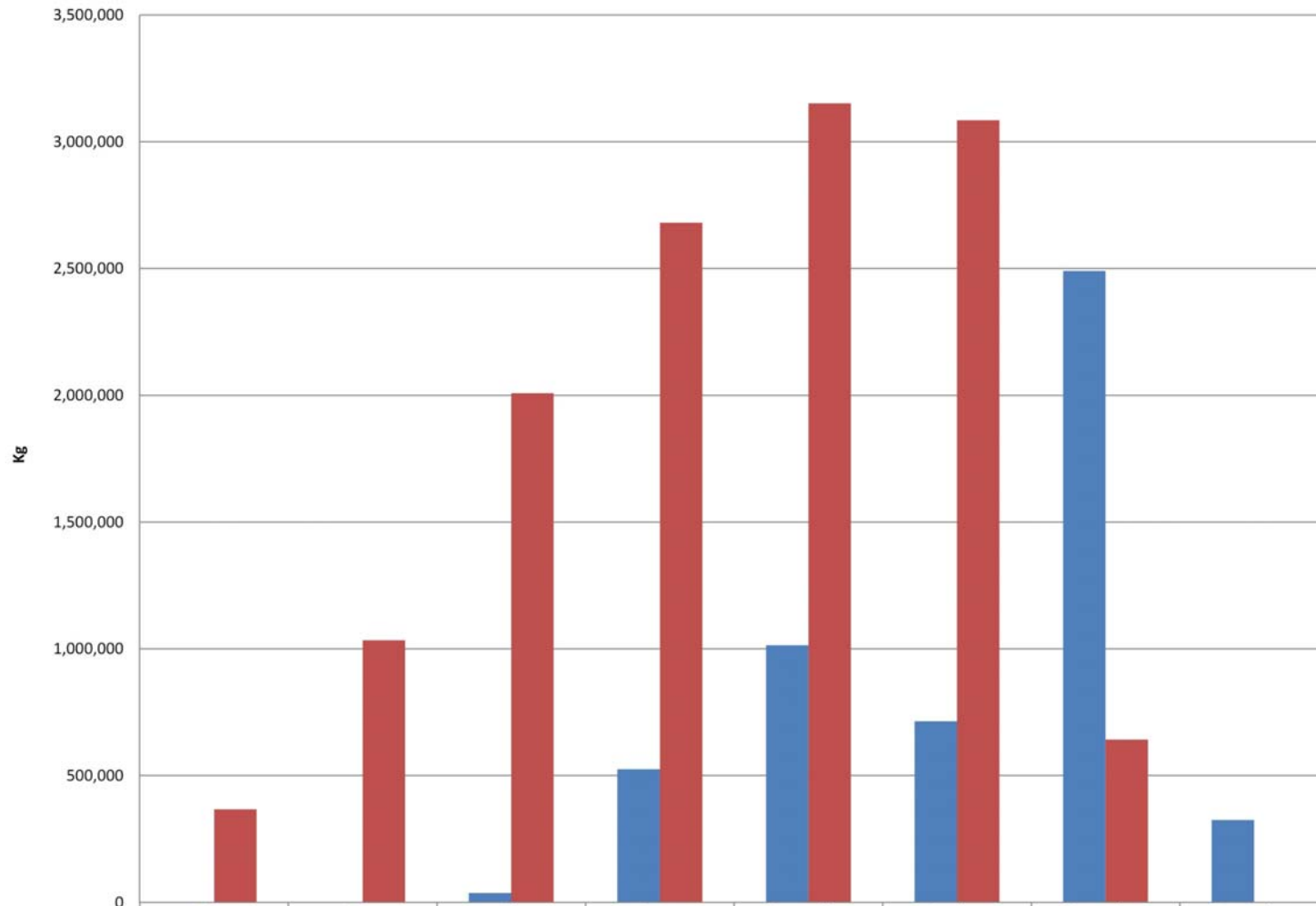


Shrimp and Turbot Harvest (2008-2010)

2008 Shrimp and Turbot Harvest

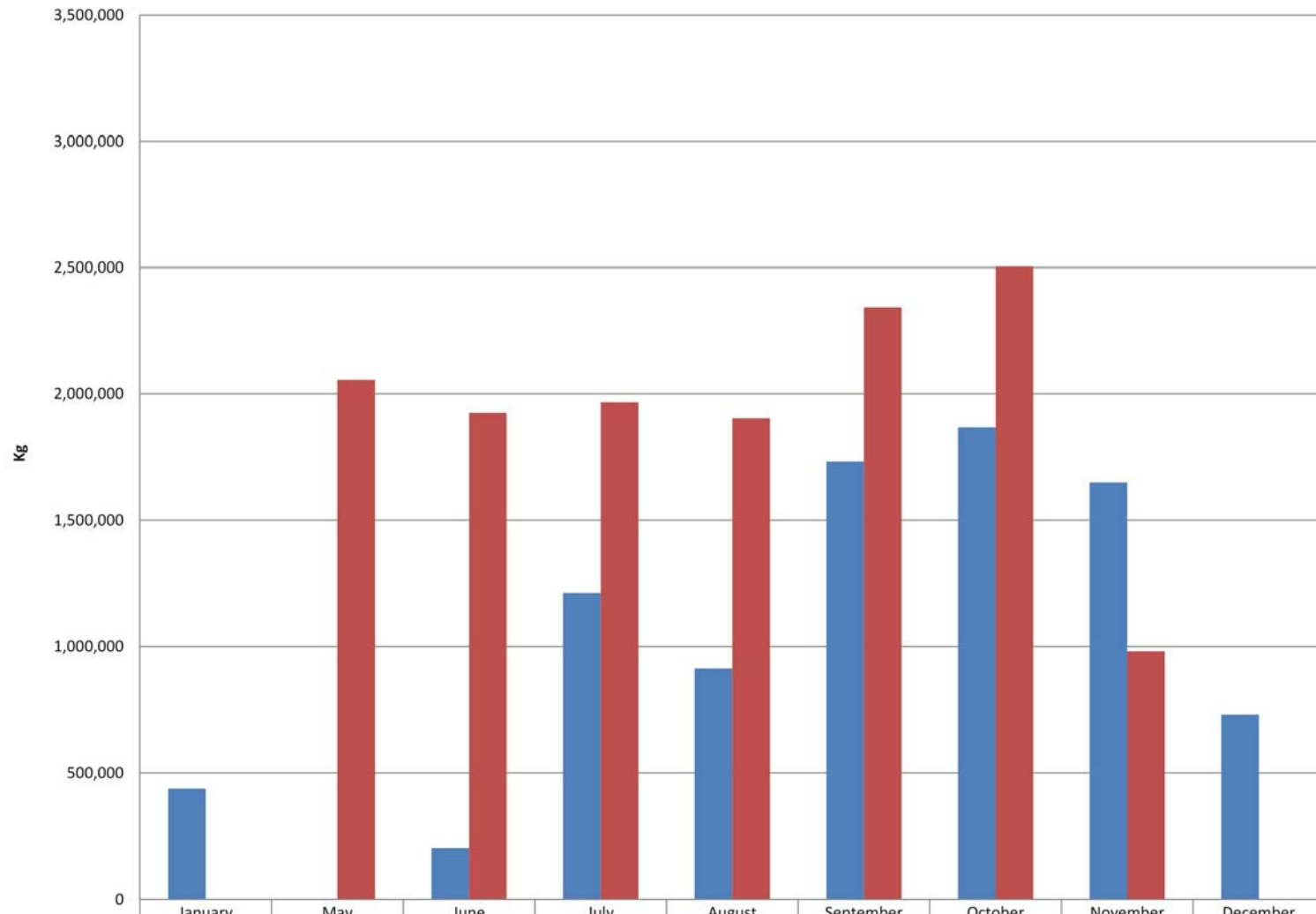


2009 Shrimp and Turbot Harvest



	May	June	July	August	September	October	November	December
■ Shrimp (2009)		1,640	36,517	525,460	1,014,330	714,280	2,490,047	325,240
■ Turbot (2009)	366,730	1,033,588	2,007,830	2,680,193	3,151,158	3,084,885	642,135	

2010 Shrimp and Turbot Harvest



■ Shrimp (2010)	437,976		203,873	1,212,242	915,029	1,732,480	1,868,797	1,650,098	731,881
■ Turbot (2010)		2,054,459	1,926,610	1,968,495	1,904,844	2,342,748	2,504,246	981,331	

December 12, 2012

Mr. Kyle Sherwin
National Energy Board
444 Seventh Avenue SW
Calgary, Alberta
T2P 0X8

Dear Sir:

RE: TGS NOPEC Geophysical Company ASA, Petroleum Geoservices and MultiKlient Invest (TGS/PGS/MKI) NorthEastern Canada 2D Seismic Exploration Survey National Energy Board Information Request No. 1

Subject: Nunavut Government-NEB Request No. 1

On 23rd February 2012, MKI sent responses to National Energy Board from Information Request No. 1. The comment below was made by the NG and the MKI response indicated that fisheries maps would be updated and provided to the NG.

Comment: 4.9 Commercial Fishing: location maps from 2006-2007 for Turbot and Shrimp are out of date. Please provide an update of the current fishing area data.

MKI Response: Updated fisheries maps will be provided to the Nunavut government.

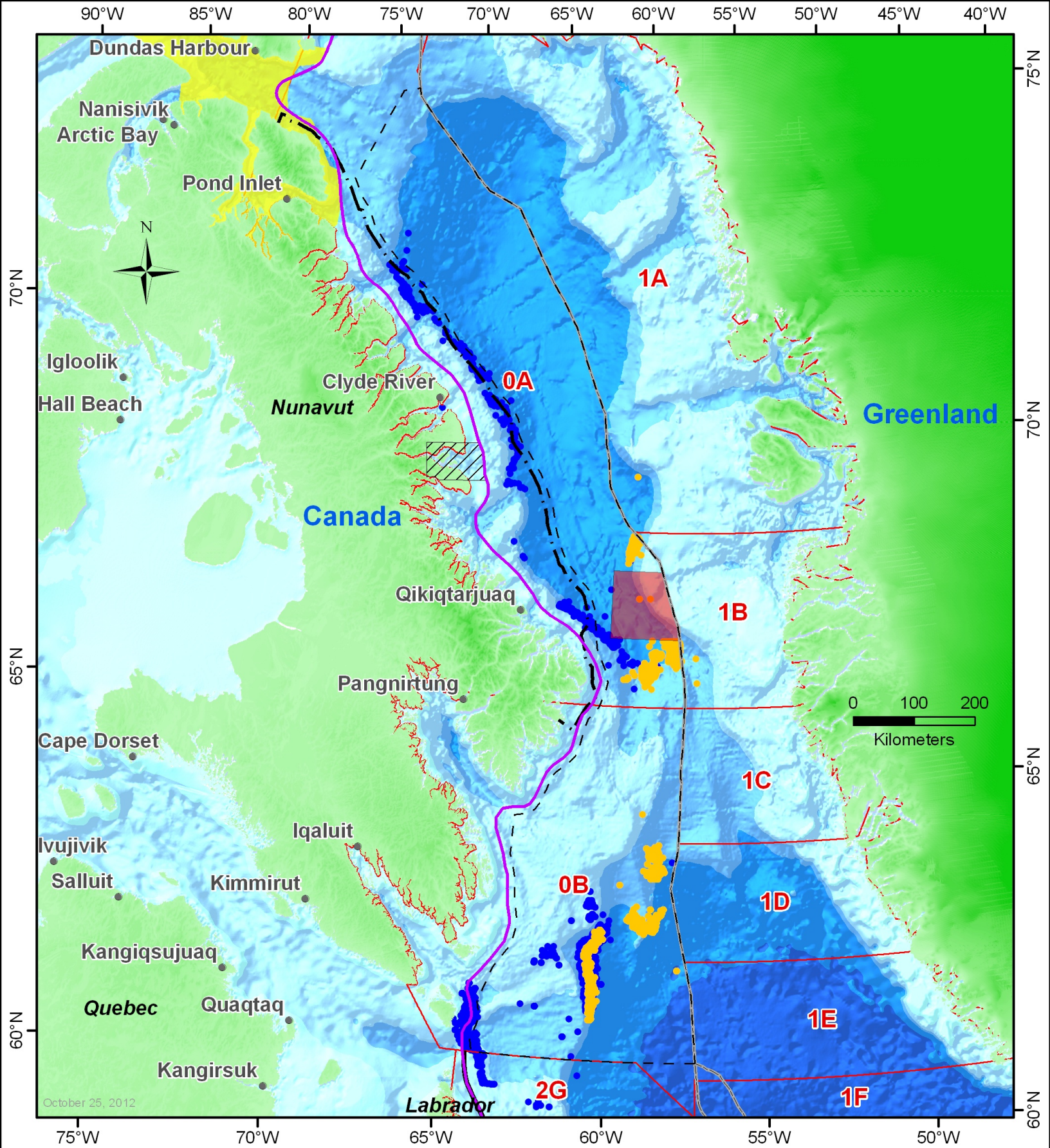
In keeping with our commitment, attached please find copies of the updated maps. Maps of Shrimp and Turbot fisheries from 2008, 2009, and 2010 are attached; however, data provided from 2011 was incomplete at the time of preparation and so are not included here.

If you require anything further, please do not hesitate to contact me.

Yours truly,



Darlene Davis
RPS Energy Canada Ltd.

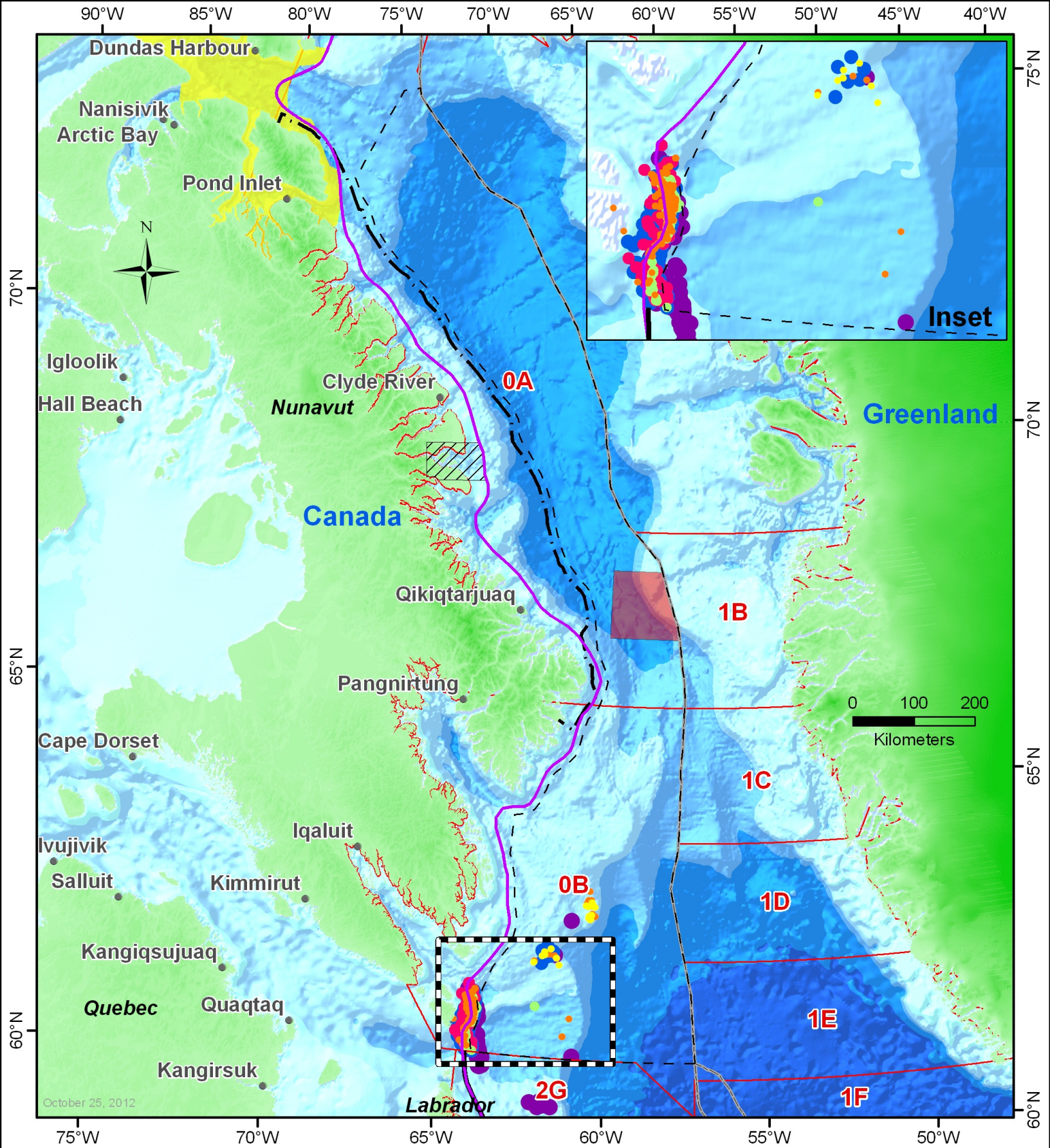


Gear Type, 2008

- Gill net
- Longline
- Trawl
- Land_Fast_Ice
- Settlement Zone
- Canada's 12 nm Territorial Sea
- World Maritime Boundaries

- Closed area to protect Narwhal and Deep-sea corals
- Proposed NMCA Boundary
- Study Area

Base data from GeoBase (2007) and NRCAN (2008).
Regional Bathymetry from BODC (2008).



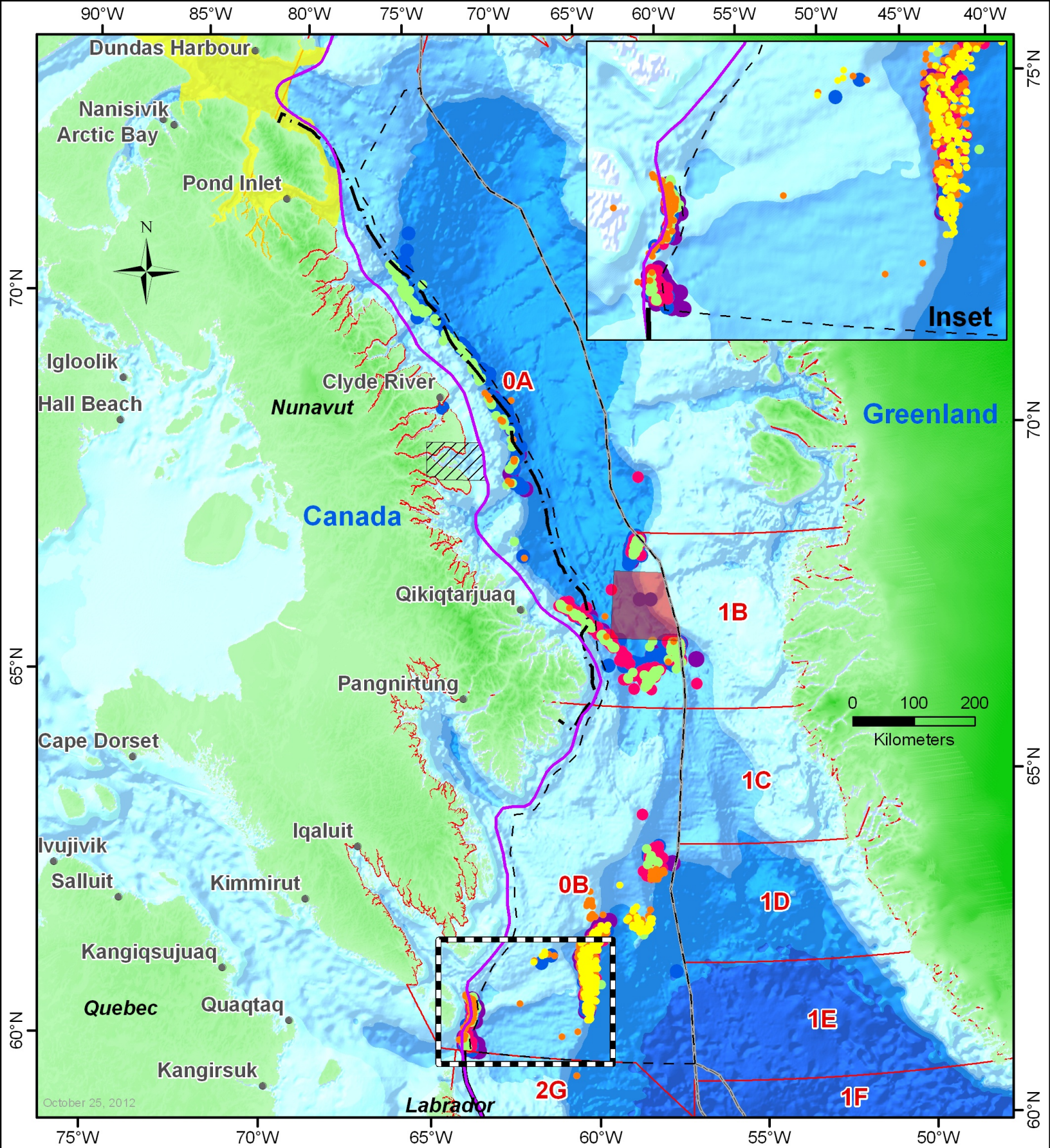
Shrimp Harvest, 2008

- June
- July
- August

- September
- October
- November
- Land_Fast_Ice
- Settlement Zone

- Canada's 12 nm Territorial Sea
- World Maritime Boundaries
- Closed area to protect Narwhal and Deep-sea corals
- Proposed NMCA Boundary
- Study Area

Base data from GeoBase (2007) and NRCAN (2008).
Regional Bathymetry from BODC (2008).



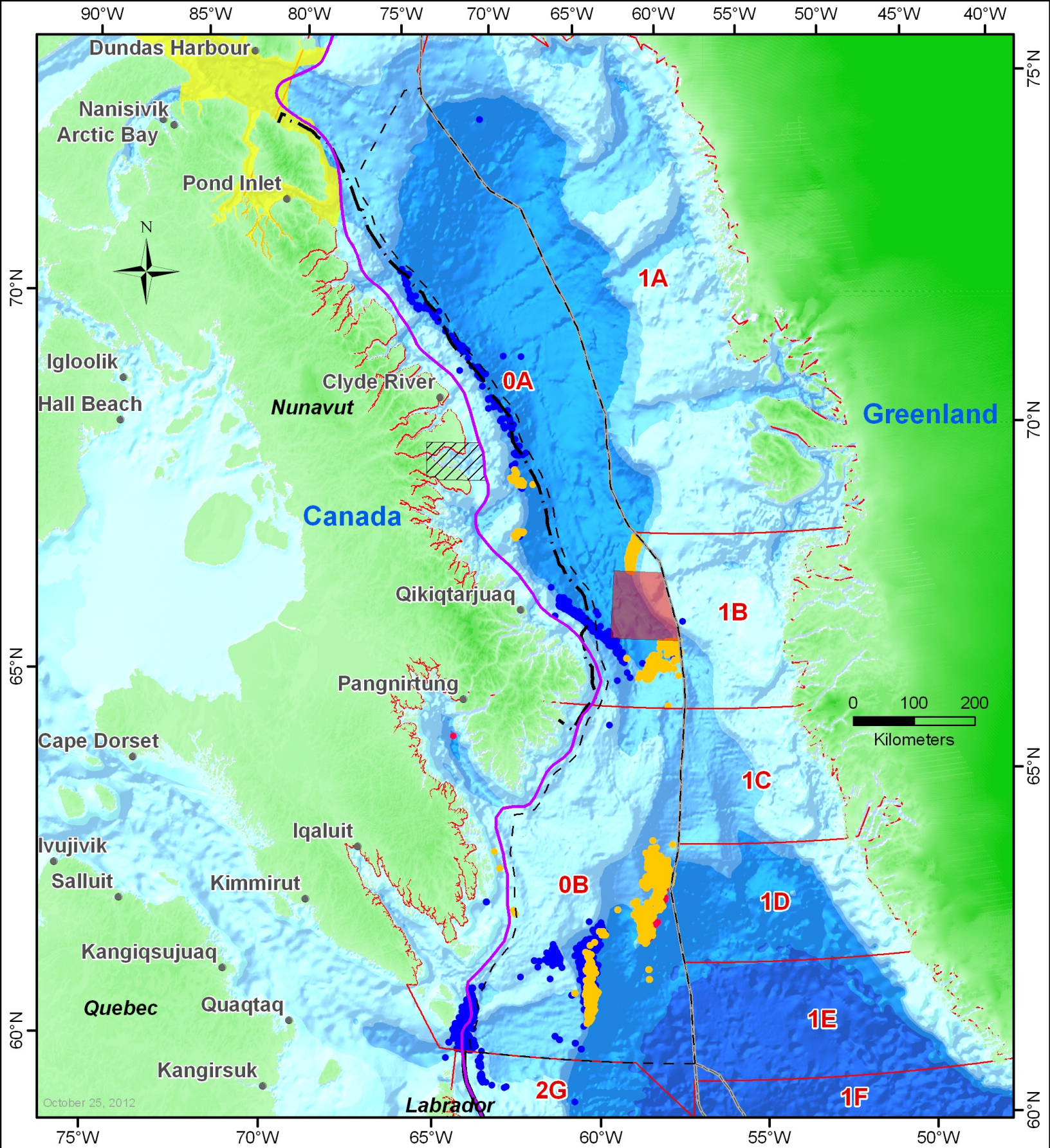
Turbot Harvest, 2008

- June
- July
- August

- September
- October
- November
- Land_Fast_Ice
- Settlement Zone

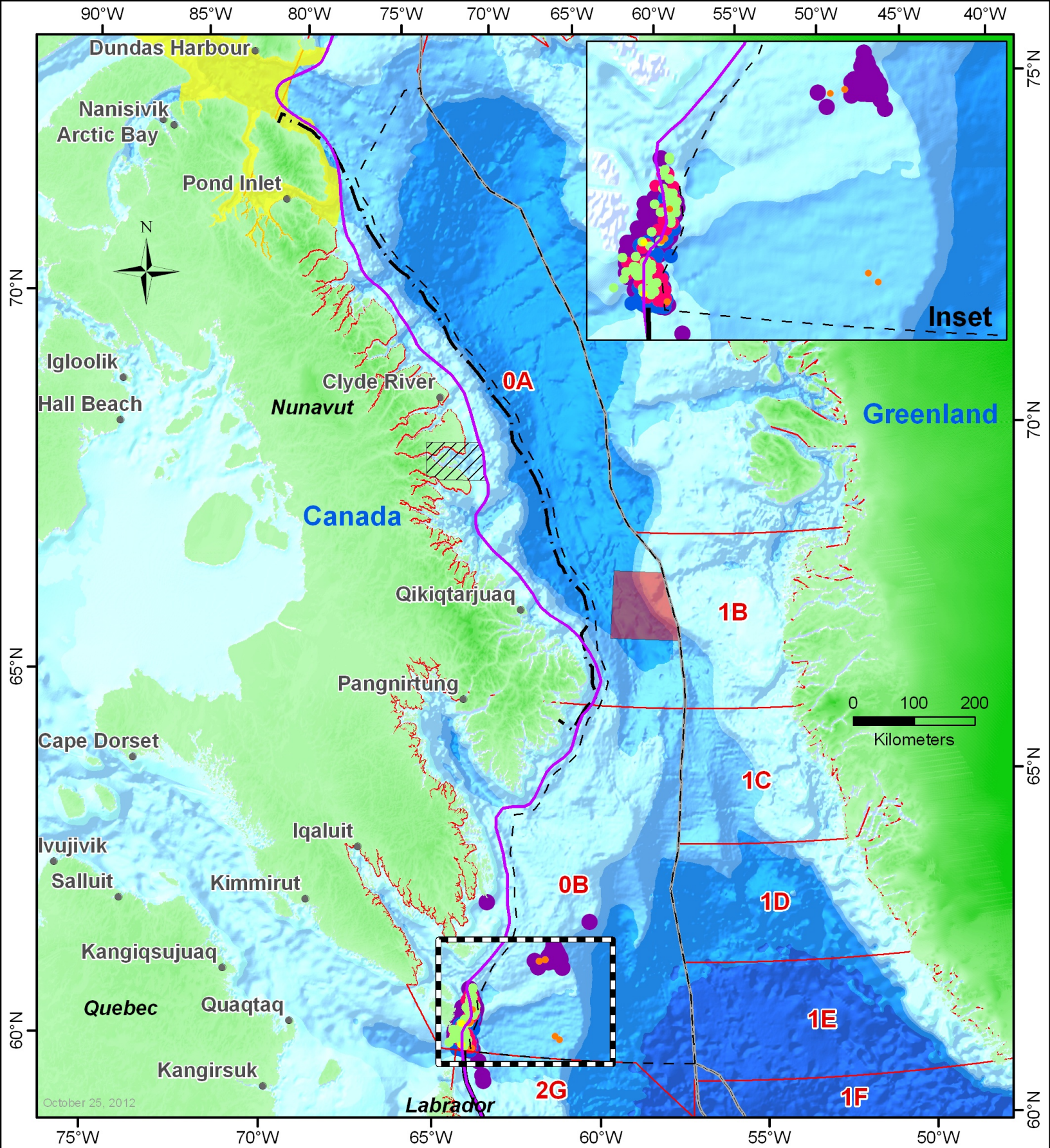
- Canada's 12 nm Territorial Sea
- World Maritime Boundaries
- Closed area to protect Narwhal and Deep-sea corals
- Proposed NMCA Boundary
- Study Area

Base data from GeoBase (2007) and NRCAN (2008). Regional Bathymetry from BODC (2008).



- Gear Type, 2009**
- Gill net
 - Longline
 - Trawl
- - - Land_Fast_Ice
 — Settlement Zone
 — Canada's 12 nm Territorial Sea
 — World Maritime Boundaries
- Closed area to protect Narwhal and Deep-sea corals
 ■ Proposed NMCA Boundary
 □ Study Area

Base data from GeoBase (2007) and NRCAN (2008). Regional Bathymetry from BODC (2008).



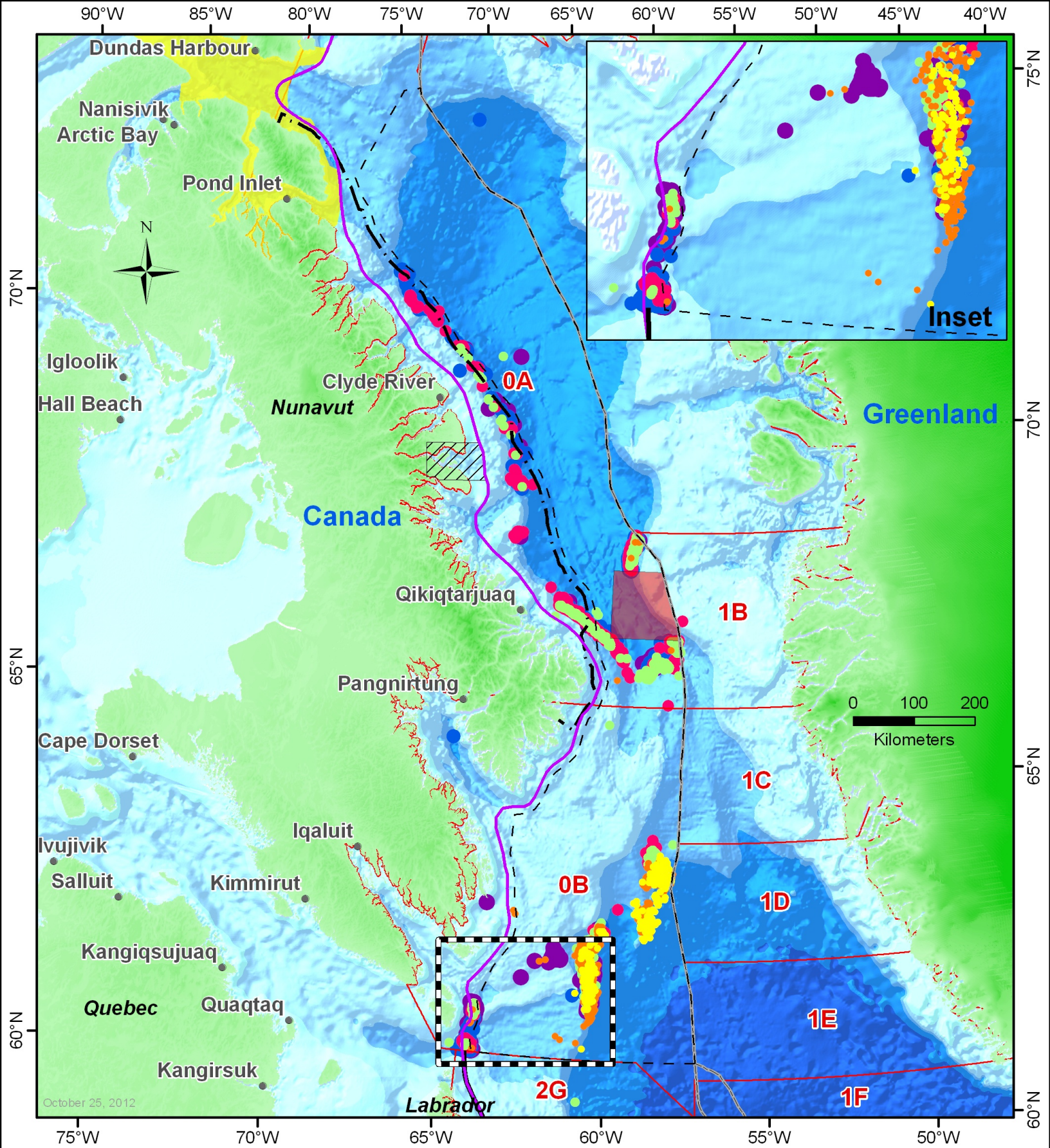
Shrimp Harvest, 2009

- June
- July
- August

- September
- October
- November
- Land_Fast_Ice
- Settlement Zone

- Canada's 12 nm Territorial Sea
- World Maritime Boundaries
- Closed area to protect Narwhal and Deep-sea corals
- Proposed NMCA Boundary
- Study Area

Base data from GeoBase (2007) and NRCAN (2008). Regional Bathymetry from BODC (2008).



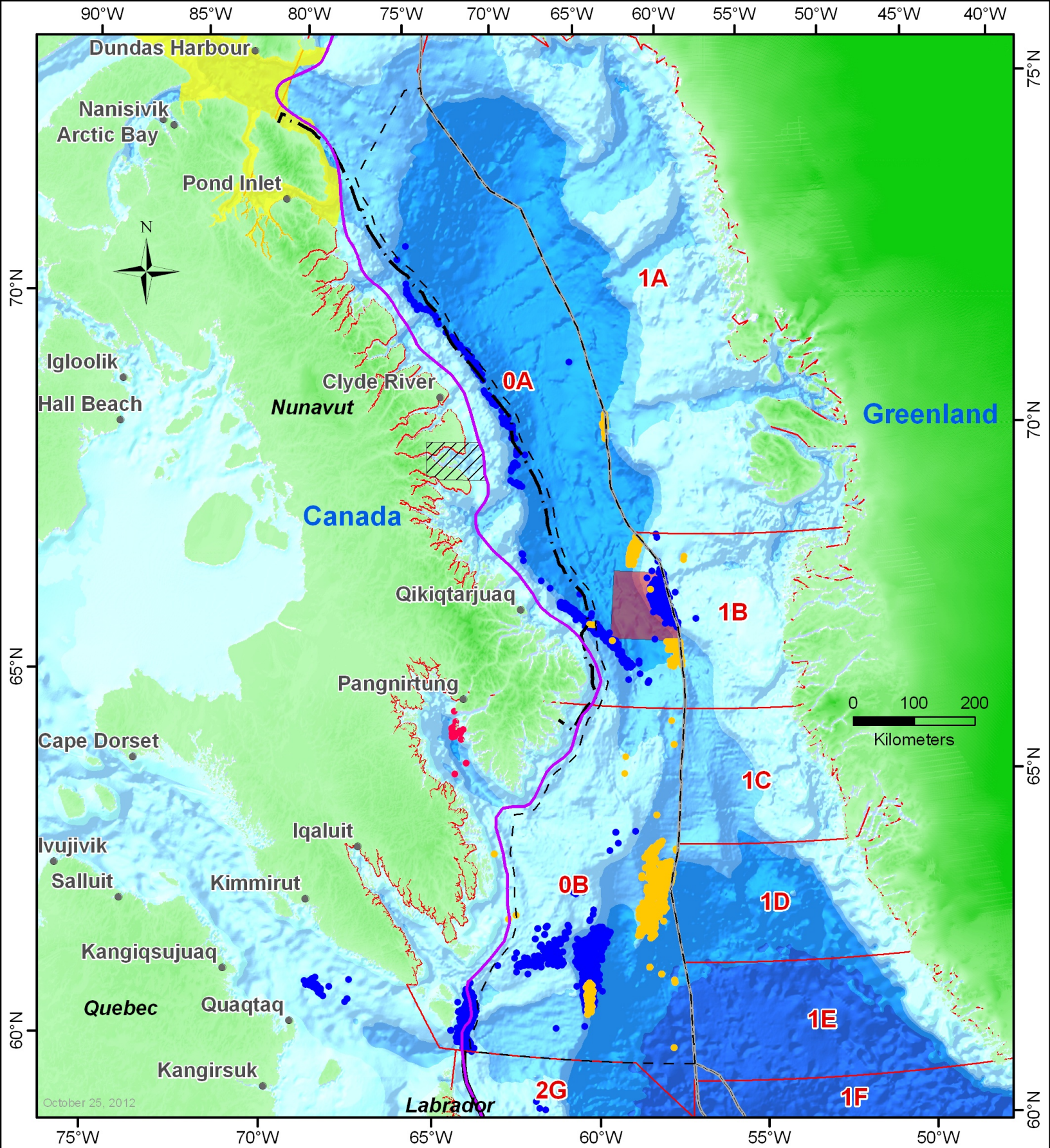
Turbot Harvest, 2009

- June
- July
- August

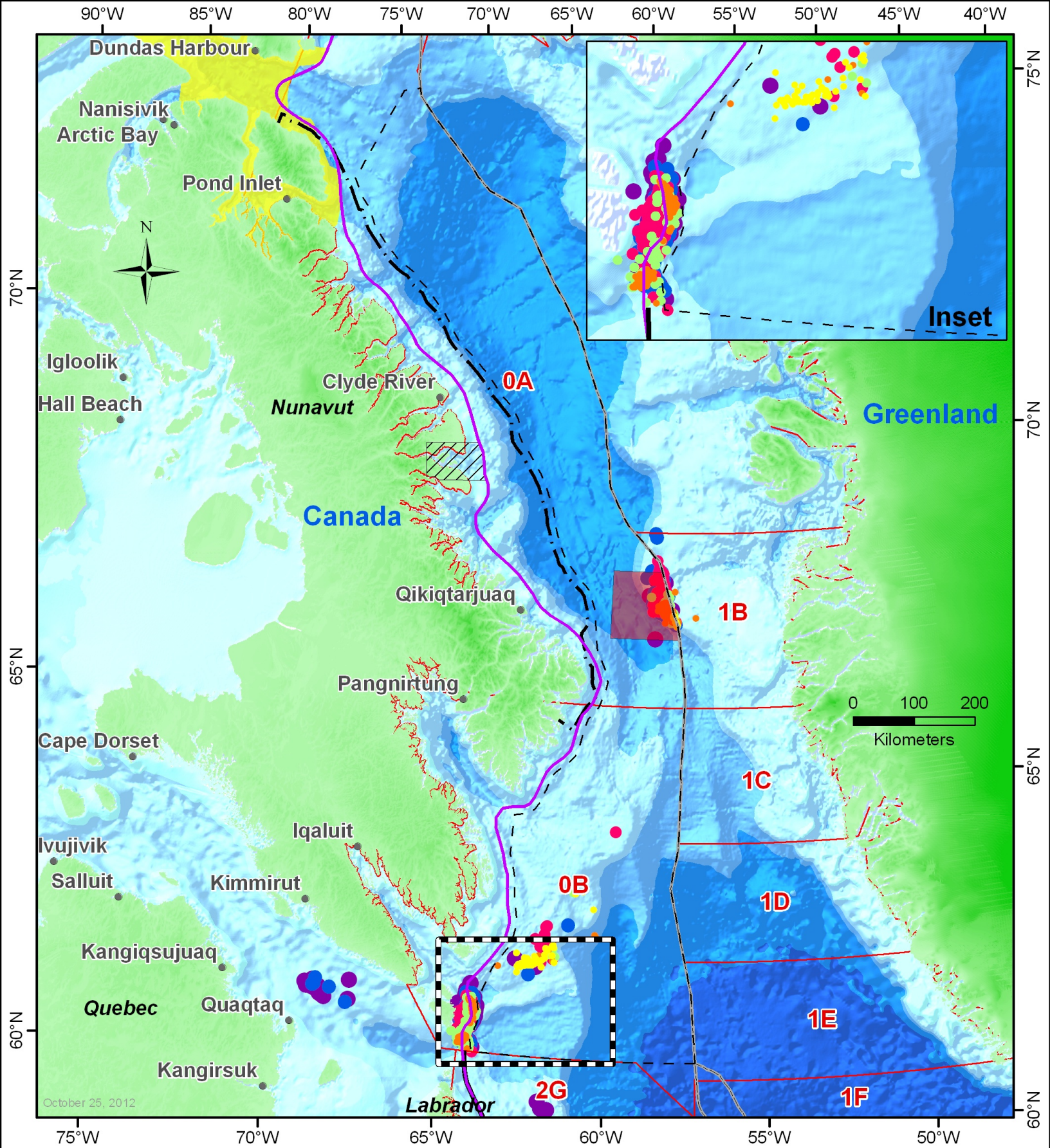
- September
- October
- November
- Land_Fast_Ice
- Settlement Zone

- Canada's 12 nm Territorial Sea
- World Maritime Boundaries
- Closed area to protect Narwhal and Deep-sea corals
- Proposed NMCA Boundary
- Study Area

Base data from GeoBase (2007) and NRCAN (2008). Regional Bathymetry from BODC (2008).



Base data from GeoBase (2007) and NRCAN (2008). Regional Bathymetry from BODC (2008).



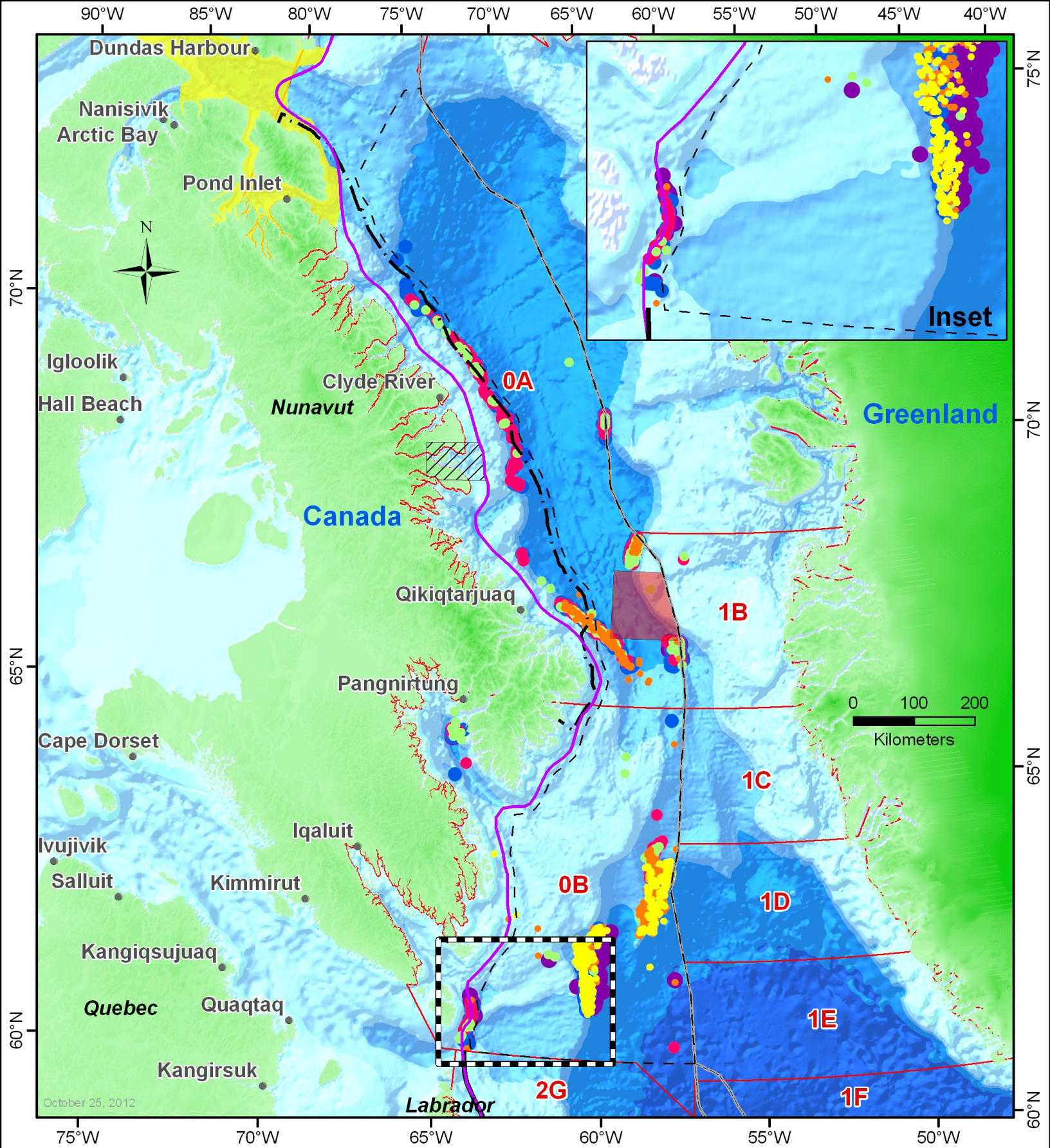
Shrimp Harvest, 2010

- June
- July
- August

- September
- October
- November
- Land_Fast_Ice
- Settlement Zone

- Canada's 12 nm Territorial Sea
- World Maritime Boundaries
- Closed area to protect Narwhal and Deep-sea corals
- Proposed NMCA Boundary
- Study Area

Base data from GeoBase (2007) and NRCAN (2008).
Regional Bathymetry from BODC (2008).



Turbot Harvest, 2010

- June
- July
- August

- September
- October
- November
- Land_Fast_Ice
- Settlement Zone

- Canada's 12 nm Territorial Sea
- World Maritime Boundaries
- Closed area to protect Narwhal and Deep-sea corals
- Proposed NMCA Boundary
- Study Area

Base data from GeoBase (2007) and NRCAN (2008). Regional Bathymetry from BODC (2008).