

Emergency Management and Response



People



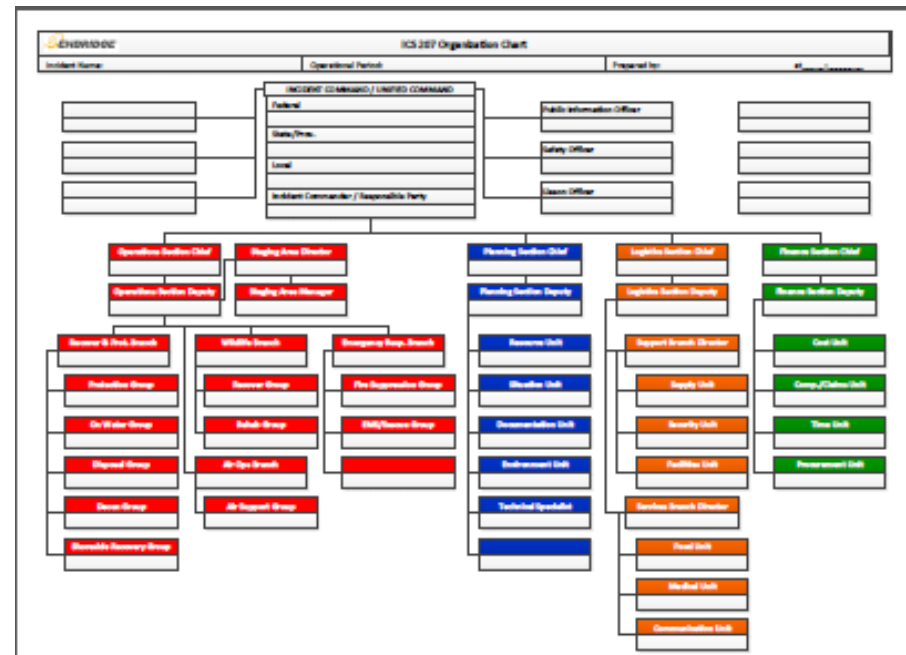
- Our number one priority is the safety of the public and our employees during an incident
- We do extensive training on Emergency Response Incident Command , Equipment Operation , Boat Handling, Notification Procedures.



People



- We have developed a position specific ICS structure in Eastern Region. Position specific training. ICS is tested during our drills and exercises
- We have multiple layers of response management teams prepared to respond



Resources



- We have our local Field Response Teams(FRT) at Westover, Mississauga Sarnia, Belleville and Montreal.
- All teams have equipment caches, response trailers, Tier 1 response capable.
- Incident Management Team members throughout the region and the company.
- E3RT members from our corporation across North America, in addition to our Crisis Management Team at the executive level
- Enbridge will prudently over respond to any incident with priorities in the following order
People, Environment , Assets, Reputation

Resources



Emergency Response Equipment



^{WVES} Emergency Response Equipment



Plans



Overarching plan is the Integrated Contingency Plan.(ICP)

- **This is an all hazards plan that includes , spills , fires and other emergencies**
- **Emergency Response Action Plan (ERAP)**
“truck books”

Inland Spill Response Tactics Guide

Site Specific Tactical Response Plans



Emergency Response Action Plan

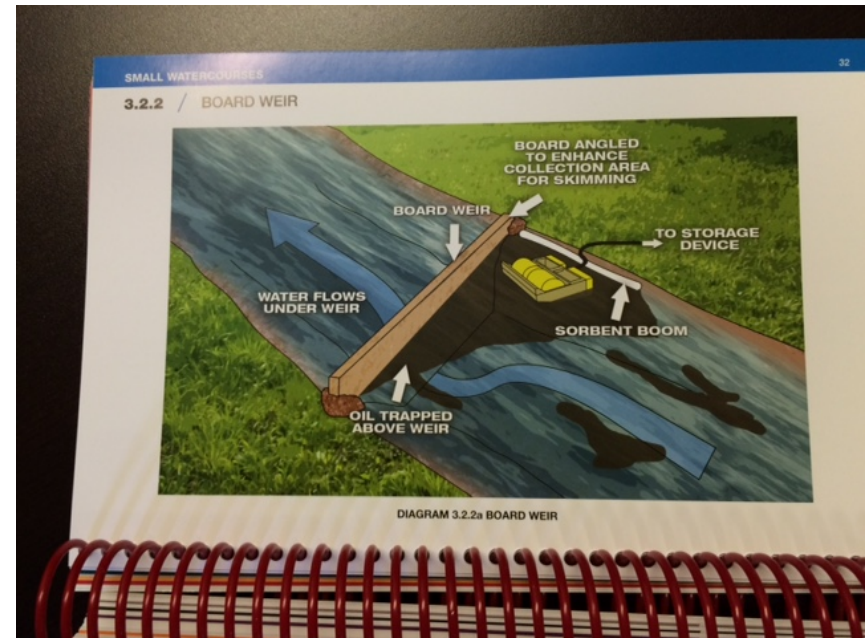
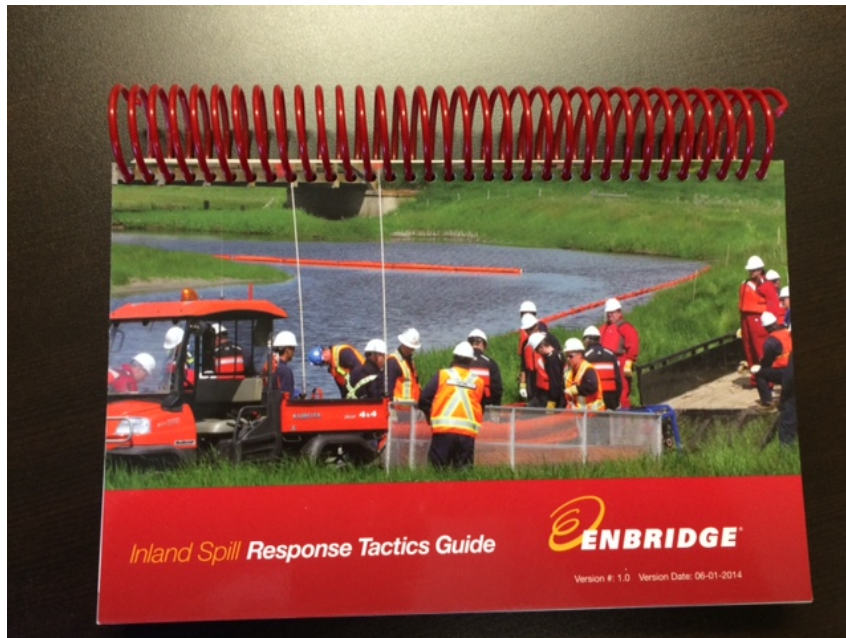
ICP Annex 6

**Eastern Region
Response Zone**

**Version: Core 2.1 | Annex 1.1
2014**



Inland Spill Response Tactics Guide



Control Points and Tactical Response Plans



		Site Number: RDHS-2 Site Name: River Access #5 Division: Rideau Heights	
SITE INFORMATION			
Type of Site: Recovery	Line(s): 9	Route Sheet #: 1047844-003	Pipeline Crossing: KP 3332
Site Description and Comments: This site is located within a cove along the west shoreline of Great Cataraqui River. Recovery should take place at the south end of the cove. Light boat traffic possible at this site, and expect pedestrians from the high rise along the west shoreline.			Valve Locations: US: 3329.71 DS: 3333.06
Province: Ontario	County / RM: Kingston	Latitude: 44° 15' 15.918" N	Longitude: 76° 28' 42.766" W
Nearby Sensitivities: Wildlife		Land Use: Residential	
Pipeline Crossing, Distance, and Control Point: Line 9 KP 3332: 8.7 km DS (CP 3332-8.7)		Staging Area Size (Est.): N/A	
Nearest Boat Ramp and Distance: 0.3 km, John Counter Blvd Boat Ramp		Waterway Width (Est.): Low: 1.0 km High: 1.1 km	
WATERWAY INFORMATION			
Type of Waterway: River	Average Current Speed: 2 - 5 km/h	Tidally Influenced: No	Waterway Width (Est.): Low: 1.0 km High: 1.1 km
Flow Impediments (e.g. dams, locks, debris): Grass, Brush, Tree Limbs		Navigable for Boats: Yes	
Seasonal Comments: River may contain ice during winter months. Heavy boat traffic and populated beach areas during summer months.			
SHORELINE CHARACTERISTICS			
Shoreline Type: Marsh	Bank Slope: Moderate	Bank Height: ~ 1 m	Existing Facilities: None
ACCESS INFORMATION			
Type of Access: Boat	Road Type: N/A	Road Surface: N/A	Access Location: Right Descending Bank
Communication Requirements / Availability: Adequate Cellular Communications			
FIELDWORK COLLECTION INFORMATION			
Data Collector Name(s): The Response Group			Date Collected: 9/23/13

Rideau Canal - Cataraqui River TRP Section 2.8



Uncontrolled When Printed

Control Point Maps

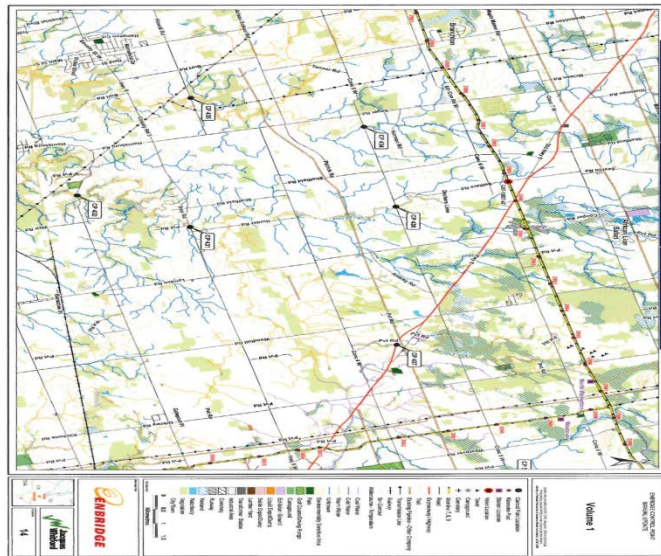


- **Location specific information that provides , maps , directions to the control point, waterbody information , flow rates , water intakes etc.**
- **1/3 of all Eastern Region control points are reviewed annually**
- **Revisions and updates are issued as required based on the data submitted from the annual reviews**

Control Point Map



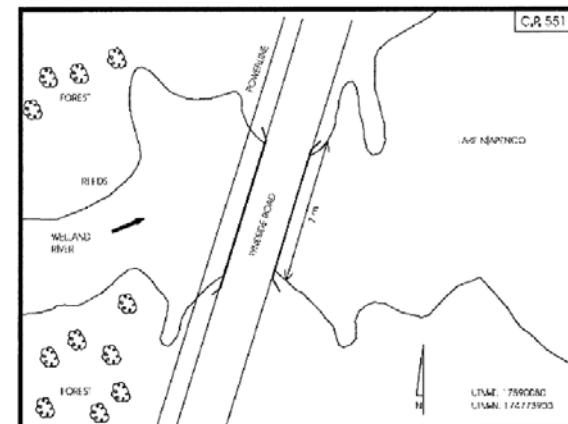
Map



Control Point Detail

INTRODUCTORY PAGE INDEX MAP TABLE OF CONTENTS PHOTO

C.P. 551



Map Reference: MAP 12/13 (CP 551)

Dist. Upstream to Pipeline: 23 km
Upstream C.P.: CP 550 Welland River HWY 6 Culvert (15 km)
Downstream C.P.: CP 552 Trinity Church Rd (3 km)

Nearest Equip Shop: Westover (49 km)

Est Travel Time: 0.7

Slick Travel Time to C.P. From Pipeline At Variable Flow:

Low: 38.3 hrs (0.6 km/hr) Moderate: 11.0 hrs (2.1 km/hr) High: 9.7 hrs (6.8 km/hr)

Directions to Control Point:

From Westover go 0.5 km E on 6th Concession Rd. Turn Right on Westover sideroad and go S for 5.8 km to Peter's Corners. Continue S on HWY 52 for 10 km. Continue S on Trinity Rd for 6.3 km. Turn Right on Sawmill Rd and go 7.0 km to HWY 6 and continue 4.2 km E. Turn Left at Tyneside and go 1.6 km N to control point 551 at Binbrook Reservoir.

Access Notes: From road

Workspace Size: 400 m²

VAC Truck Accessible: Yes

Possible Staging Area: Yes

Boat Launch: Poor - use Pitman from bridge when boat required

- **Site specific assessments were completed on a number of our larger watercourses**
- **More in depth drill down to provide additional information to our FRT's and IMT's**
- **They provide some tactics**
- **Contact information for stakeholders**
- **Considers special features such as Welland Canal , Hydro Electric Water Intakes, Niagara Falls, Finch Subway**

Emergency Response Exercises



- **Mandated by regulation**
- **Full Scale , Functional , TTX , Equipment Drills, Oil recovery under Ice**
- **Cross Border Exercises**
- **Municipal and other stakeholder partners**

Questions?



Thank You!

David Clarke

**Emergency Response Coordinator – Eastern Region
Mississauga Office ENBRIDGE PIPELINES INC.**

Cell (705) 715-8197 | Office (905) 659-2041

enbridge.com

Integrity. Safety. Respect.