

Life takes energy. And we're proud to bring it to you.

We transport energy

- Operate the world's longest oil and liquids transport system
- A significant and growing presence in natural gas transmission and midstream businesses
- Increasing involvement in power transmission

We distribute energy

- Own/operate Canada's largest natural gas utility, serving over 2 million customers
- Serving Ontario, Quebec, New Brunswick and New York

We generate energy

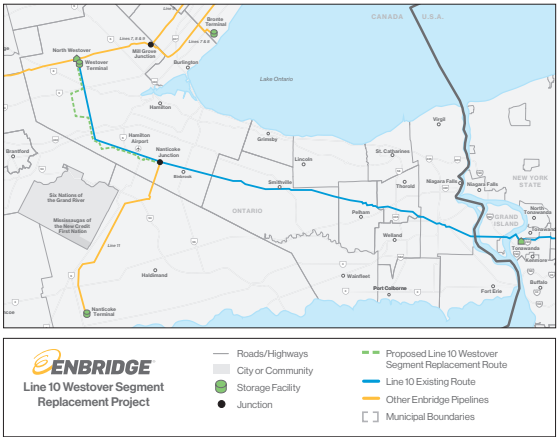
- Generate over 2,200 MW of renewable energy, enough to power over 750,000 homes



About Enbridge's Line 10

Line 10 is part of our 27,000-km petroleum network

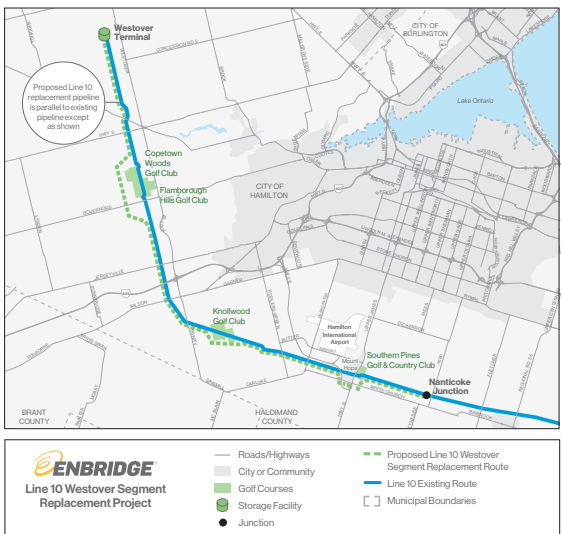
- Runs 143 km (89 miles), from Hamilton to Buffalo
- Carries crude oil from Western Canada and the Bakken Region
- Feeds the United Refinery in Warren, Pennsylvania
- Operating safely for more than 50 years
- Contributes to Ontario's economy and North America's energy security



Westover Segment Replacement Project

We have proposed a maintenance-based segment replacement

- Replacing 35 km of 12-inch-diameter pipeline with new 20-inch-diameter pipe from our Westover Terminal to Nanticoke Junction
- Replacement will:
 - proactively address ongoing maintenance needs
 - improve system safety and reliability
 - restore original operating capacity
- No capacity expansion is planned beyond the already approved maximum (74,000 barrels per day)



Consultation and Project Schedule

We are committed to open engagement with the community throughout the life of the project

June 2015	Initial government, Aboriginal, landowner and public outreach
June to November 2015	Pre-application consultation; one-on-one meetings, open houses
July 2015 to August 2016	Civil and environmental surveying
November 2015	File project application with National Energy Board (NEB)
December 2015 to 2018	Ongoing consultation
Third quarter 2017	Pipeline construction (contingent on NEB approval)
First quarter 2018	Project goes into service
September 2018	Right-of-way restoration complete

Pipeline Rerouting

The majority of the replacement route will follow the existing Line 10 right-of-way

- Three proposed reroutes are being considered:
 - Copetown Woods and Flamborough Hills golf clubs
 - Knollwood Golf Club
 - the Mount Hope subdivision and Southern Pines Golf & Country Club
- New rights-of-way would be acquired for these reroutes
- A final pipeline route will be determined through:
 - field studies (environmental and archeological)
 - input from directly affected landowners
- Pipeline routes are often not final until the end of the regulatory process



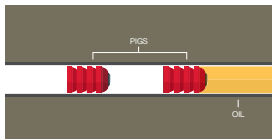
What is Decommissioning?

Decommissioning is when a pipeline is taken safely and permanently out of service, but left in place

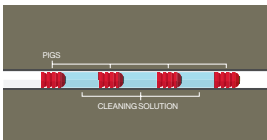
- A standard industry practice, used worldwide
- The safest and least disruptive option for landowners
 - avoids additional excavation and construction activity
 - reduces the risk of soil stability issues
 - reduces potential risk to existing pipelines from heavy equipment
- We will continue to monitor the decommissioned line as we would an active one

Decommissioning, Step by Step

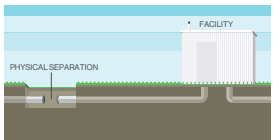
Before decommissioning a line, we perform engineering and environmental assessments in consultation with landowners. Once the National Energy Board approves a decommissioning application, the process typically involves these steps.



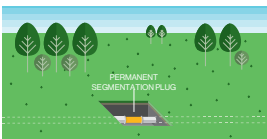
- 1. Remove the vast majority of the oil** using specially designed cleaning instruments.



- 2. Clean the Pipeline:** A combination of cleaning instruments and cleaning solution is used to wipe and clean the pipeline.



- 3. Disconnect the pipeline,** sealing it off from active facilities like pump stations, to prevent oil from re-entering the decommissioned line.



- 4. Segment the pipeline** with permanent physical barriers to prevent it from acting as a water conduit. Segmentation plugs are strategically placed along the pipeline.



- 5. Monitor the pipeline** by maintaining cathodic protection, regular patrols, exact location signs, depth-of-cover surveys and Click Before You Dig program information.

Traffic Safety

We are committed to keeping the roads safe during project construction

- Community and crew safety is paramount
- Traffic safety and mitigation measures include:
 - A plan to minimize impacts on area roads
 - Buses to transport construction crews to the job site, where possible
 - Moving heavy equipment during off-peak hours
 - Pilot cars for dimensional loads
 - Noise mitigation, dust suppression, signage



Construction and the Environment

We make every effort to limit our footprint

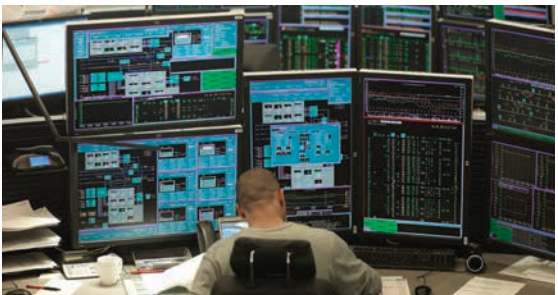
- We do this by:
 - Using existing rights-of-way where possible
 - Horizontal directional drilling across large rivers or sensitive crossings
 - Compliance, at all times, with regulatory authorities
 - Using existing access routes to/from construction sites, minimizing workspace and limiting ground disturbance
- Habitat restoration methods include:
 - Reclamation, seeding and tree planting
 - Environmental monitoring and mitigation
 - Follow-up landowner outreach



Line 10 Emergency Response

Enbridge has a comprehensive, region-specific, NEB-approved Emergency Response Plan

- We employ world-class prevention technology and have dedicated oil spill response equipment
- In the event of an incident on Line 10, we are ready to respond, rapidly and effectively, in many ways:
 - Human and automated resources to monitor and control the line at our Pipeline Control Centre
 - Trained emergency response teams in the region, including environmental specialists, with 24/7/365 response capacity
 - Large inventory of equipment and resources in the Westover area to effectively respond in the unlikely event of a pipeline emergency
 - A minimum of four emergency response exercises held annually in the region to test systems, equipment and personnel (most are large, multi-agency drills involving a water element)



Emergency Response— Being prepared

We work with local communities and their emergency responders to ensure our plans address local needs and concerns

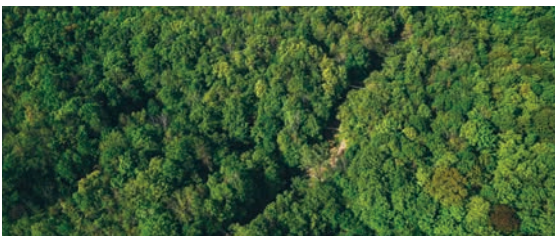
Initiatives include:

- Meeting annually with emergency responders and municipal officials to review:
 - Enbridge operations, pipeline locations and products transported
 - Emergency Response Plans
 - Enbridge's emergency phone number
 - Hazards at station sites
 - Leak recognition and appropriate response
 - Material Safety Data Sheets
 - How the emergency response agency can assist in the event of a pipeline emergency
- Implementing an online training program to help emergency responders and 9-1-1 call centre personnel quickly and effectively respond to a pipeline emergency
- A related Emergency Responder Education Program, which offers free, unlimited training and pipeline emergency response tactics
- Involving local first responders in many of our exercises

Protecting the Environment

The safety of people, and protection of the environment, is our top priority at Enbridge

- When we plan a pipeline project, we:
 - Take special care to minimize our environmental impact
 - Communicate continuously with regulatory agencies
 - Incorporate environmental evaluations into construction planning
 - Comply with all federal and provincial environmental regulations, with oversight from trained, experienced environmental inspectors and resource specialists
- Specific measures for the Line 10 Westover Segment Replacement Project include:
 - Environmental field surveys to evaluate pipeline routing
 - Planning the route along the pre-existing right-of-way as much as possible
 - Conducting an environmental and socio-economic assessment in support of our National Energy Board regulatory application



Regulatory Oversight

The Line 10 Westover Segment Replacement Project is regulated by the National Energy Board (NEB)

- The NEB is an independent federal agency that acts in the public interest to promote safety and security, environmental protection and economic efficiency in the regulation of pipelines, energy development and trade
- Pipeline or power line projects that cross provincial or international borders must apply and receive NEB approval
- The NEB will assess Enbridge's Line 10 Westover Segment Replacement Project application, which will describe our proposed plans in various areas including:
 - Public and First Nations/Aboriginal consultation
 - Environmental and socio-economic affects
 - Engineering and construction
 - Landowner compensation
- Enbridge will also comply with all applicable provincial and municipal regulatory requirements
- You may contact the NEB at:



neb-one.gc.ca



1-800-899-1265



info@neb-one.gc.ca

Local Opportunities

This project will provide opportunities for qualified local goods and services providers, including Aboriginal businesses

- Peak construction labour force of 300 persons
- Area businesses—hotels, grocery stores, restaurants—will benefit from the presence of Enbridge construction crews and personnel
- Most business opportunities will come from our primary contractor, who will be selected in 2017



Aboriginal and Native American Policy

We recognize the history, uniqueness and diversity of Aboriginal and Native American Peoples

- We're committed to forging mutually beneficial relationships through:
 - Recognizing legal and constitutional rights
 - Respecting traditional ways, heritage sites and the relationship Aboriginal and Native American Peoples have with the land and the environment
 - Fortright and sincere consultation about our projects and operations
 - Working to achieve sustainable benefits from our projects and operations (training and education, employment, procurement, business development and community investment)
 - Fostering understanding and respect for local Aboriginal and Native American Peoples among our employees and contractors

