

NATIONAL ENERGY BOARD

**IN THE MATTER OF AN APPLICATION BY
TRANSCANADA PIPELINES LIMITED
TO AMEND THE CANADIAN MAINLINE TRANSPORTATION TARRIF IN RESPECT TO
STORAGE TRANSPORTATION SERVICE**

TO: The Secretary
National Energy Board
517 – 10th Avenue SW
Calgary, AB T2R 0A8

ENBRIDGE GAS DISTRIBUTION INC.

ERRATA

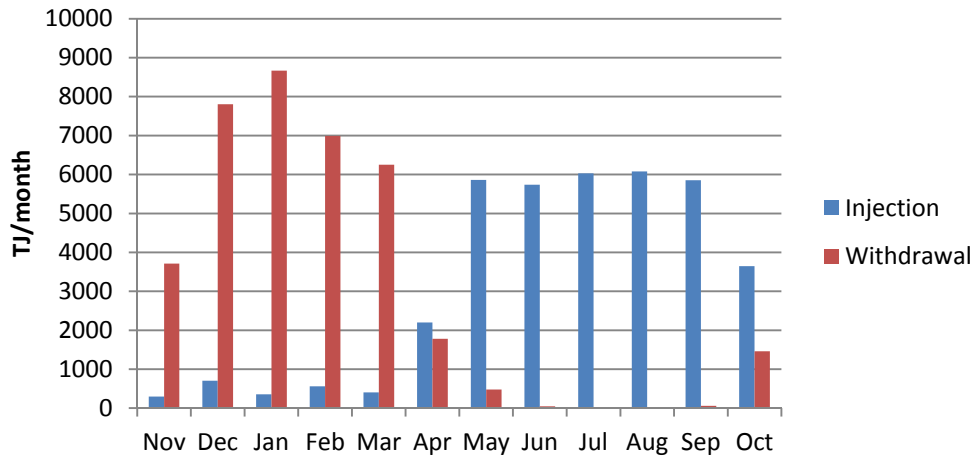
SEPTEMBER 15, 2016

Document Name	Errata	NEB Reference
Written Evidence of Enbridge Gas Distribution Inc.	<p>At Adobe page 2, Q/A 2, lines 8-9 read: "... a significant portion of its LHFT and all of its STS to the end of 2022 as part of a new Term-up provision..."</p> <p>It should read: "... a significant portion of its LHFT and all of its STS to the end of <u>October</u> 2022 as part of a new Term-up provision"</p>	A5D6F2
Written Evidence of Enbridge Gas Distribution Inc.	<p>At Adobe page 14, Q/A 22, lines 12-13 read: "STS injections will be further restricted, since only 71% of the Withdrawal Quantity..."</p> <p>It should read: "STS injections will be further restricted, since only <u>the lesser of its LHFT quantity or 71% of the Withdrawal Quantity...</u>"</p>	A5D6F2
Written Evidence of Enbridge Gas Distribution Inc.	<p>At Adobe page 23, Q/A39, line 8 reads: "This is shown in the bar charts attached in Appendix 3, which are the same bar charts..."</p> <p>It should read: "This is shown in the bar charts attached in Appendix <u>2</u>, which are the same bar charts..."</p>	A5D6F2
Written Evidence of Enbridge Gas Distribution Inc.	<p>At Adobe page 24, Q/A 40, lines 10-11 read: "Currently STS shippers can transport their aggregate LHFT capacity to the storage location using firm transportation in the summer and just below firm transportation in the winter."</p> <p>It should read: "Currently <u>the majority of</u> STS shippers can transport their aggregate LHFT capacity to the storage location using firm transportation <u>annually, and the remaining STS shippers can transport their aggregate LHFT capacity to the storage location using firm transportation</u> in the summer and just below firm transportation in the winter."</p>	A5D6F2

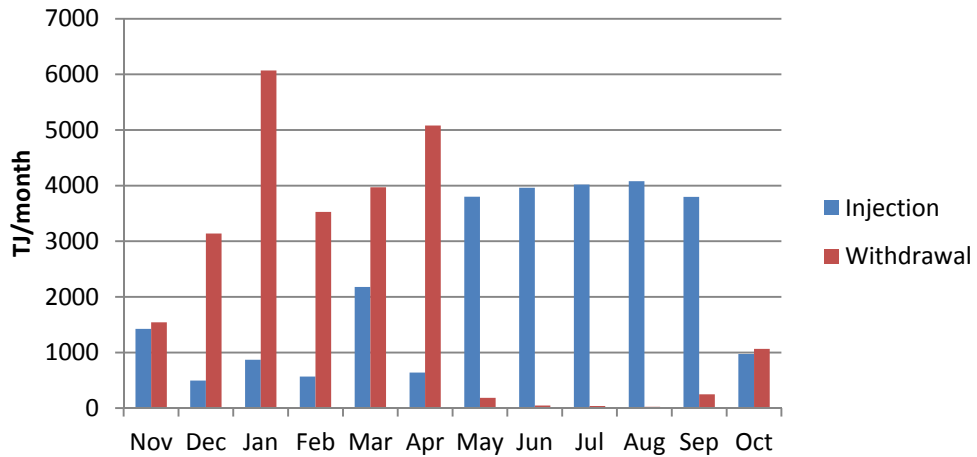
Written Evidence of Enbridge Gas Distribution Inc., Appendix 3	<p>Appendix 3 to the Written Evidence should be replaced with the attachment to these errata, labelled Revised Appendix 3.</p> <p>The figures labelled “Monthly Injection & Withdrawal for 2013/2014 (EGDI Only – EDA & CDA)” and “Monthly Injection & Withdrawal for 2015/2016 (EGDI Only – EDA & CDA)” are the same in both Appendix 3 and <u>Revised</u> Appendix 3.</p>	A5D6F4
--	---	--------

REVISED APPENDIX 3

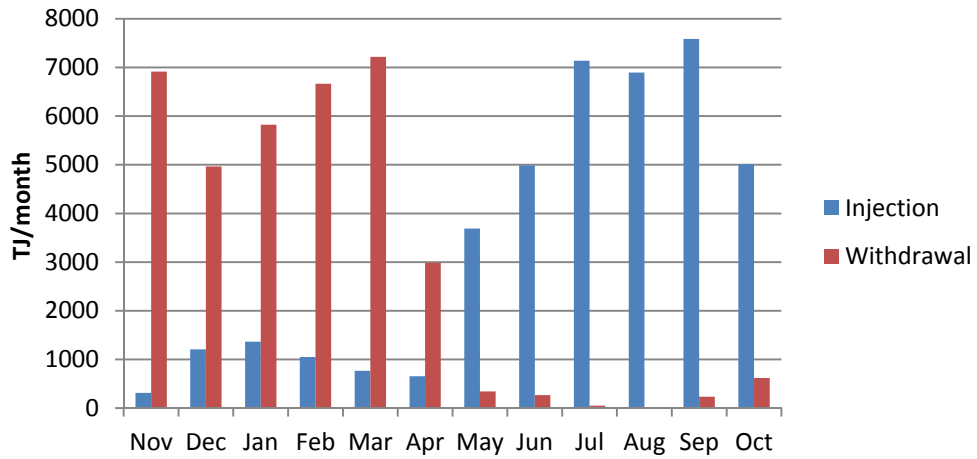
Monthly Injection & Withdrawal for 2010/2011 (EGDI Only - EDA & CDA)



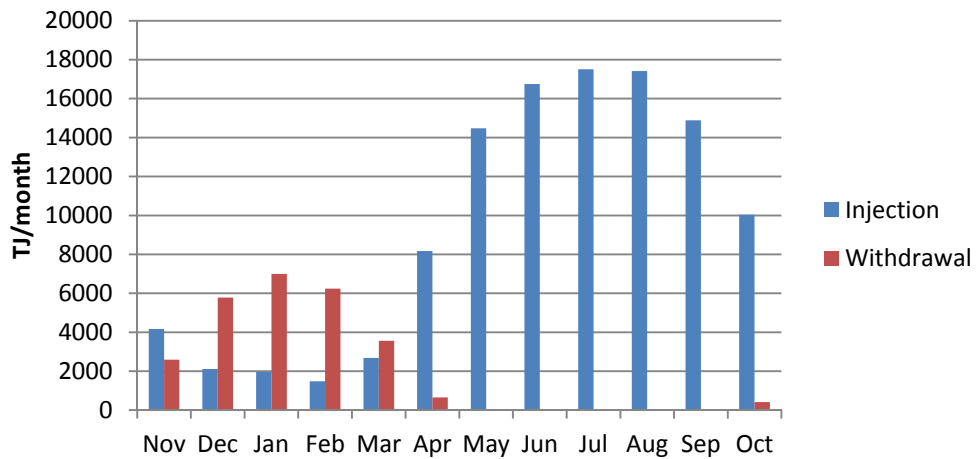
Monthly Injection & Withdrawal for 2011/2012 (EGDI Only - EDA & CDA)



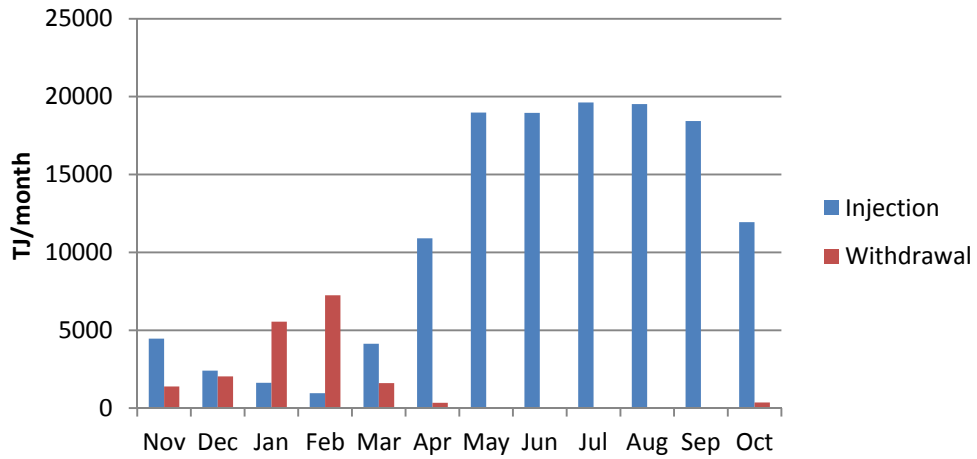
Monthly Injection & Withdrawal for 2012/2013 (EGDI Only - EDA & CDA)



Monthly Injection & Withdrawal for 2013/2014 (EGDI Only - EDA & CDA)



**Monthly Injection & Withdrawal for 2014/2015
(EGDI Only - EDA & CDA)**



**Monthly Injection & Withdrawal for 2015/2016
(EGDI Only - EDA & CDA)**

