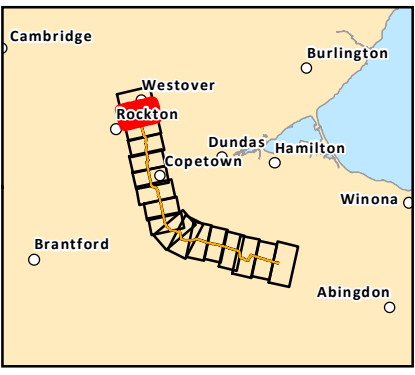
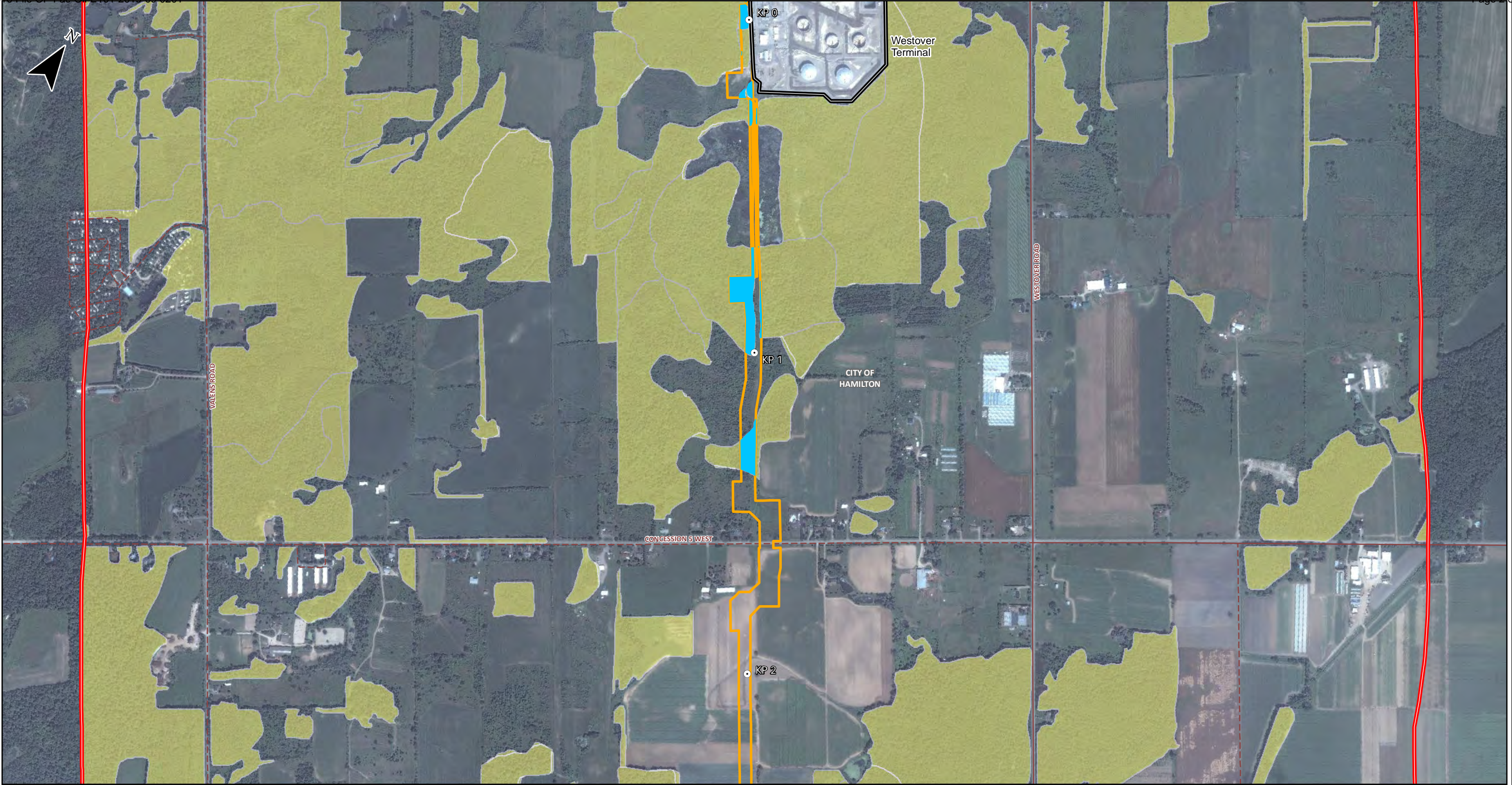
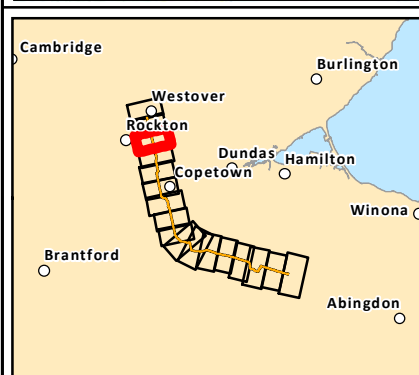
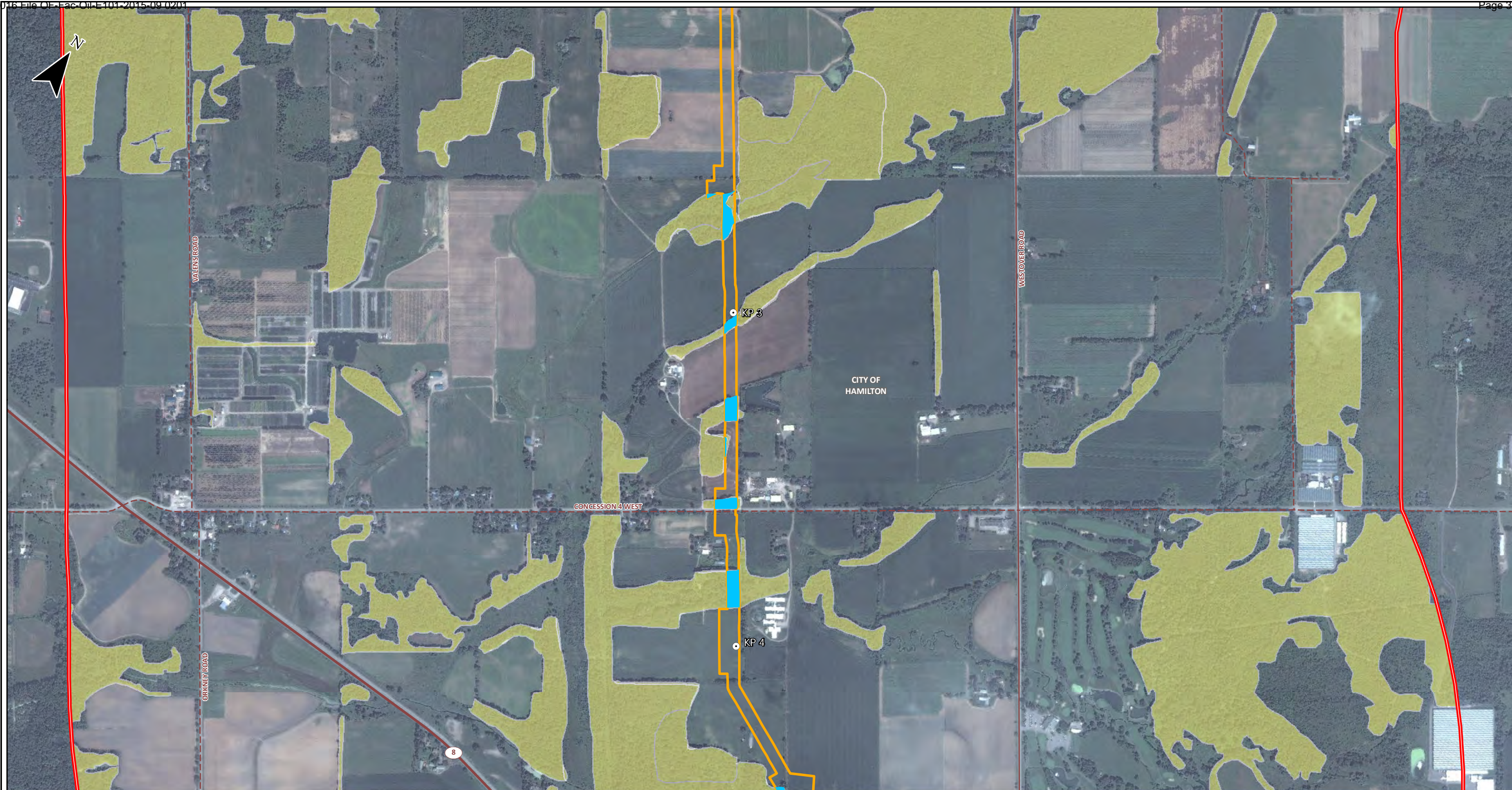


	Imagery: Service Layer Credits: Source: Esri, DigitalGlobe, GeoEye, Earthstar Geographics, CNES/Airbus DS, USDA, USGS, AEX, Getmapping, Aerogrid, IGN, IGP, swisstopo, and the GIS User Community 2015; Pipeline Footprint Current to Rev 1.8; Roads, Indian Reserves, Railways, City/Town/Municipal Boundaries: Ontario Ministry of Natural Resources, 2015. <small>Projection: NAD83 UTM Zone 17N Although there is no reason to believe that there are any errors associated with the data used to generate this product or in the product itself, users of these data are advised that errors in the data may be present.</small>		FIGURE 1A WOODLANDS DISTURBED IN THE VEGETATION REGIONAL STUDY AREA ENBRIDGE PIPELINES INC. PROPOSED LINE 10 WESTOVER SEGMENT REPLACEMENT PIPELINE PROJECT	
		SCALE: 1:12,000 0 200 m (All Locations Approximate)	October 2016	664756
		Mapped By: LA	Checked By: SL	



	Imagery: Service Layer Credits: Source: Esri, DigitalGlobe, GeoEye, Earthstar Geographics, CNES/Airbus DS, USDA, USGS, AEX, Getmapping, Aerogrid, IGN, IGP, swisstopo, and the GIS User Community 2015; Pipeline Footprint Current to Rev 1.8; Roads, Indian Reserves, Railways, City/Town/Municipal Boundaries: Ontario Ministry of Natural Resources, 2015.	Projection: NAD83 UTM Zone 17N Although there is no reason to believe that there are any errors associated with the data used to generate this product or in the product itself, users of these data are advised that errors in the data may be present.	FIGURE 1B WOODLANDS DISTURBED IN THE VEGETATION REGIONAL STUDY AREA ENBRIDGE PIPELINES INC. PROPOSED LINE 10 WESTOVER SEGMENT REPLACEMENT PIPELINE PROJECT	
			October 2016	664756
			Mapped By: LA	Checked By: SL



- Kilometre Post
- Woodland
- Disturbed Woodlands
- Vegetation RSA
- Line 10 Replacement Pipeline Footprint
- Highway/Freeway
- Road
- Access/Resource



SCALE: 1:12,000
0 200 m
(All Locations Approximate)

FIGURE 1C

WOODLANDS DISTURBED IN THE VEGETATION
REGIONAL STUDY AREA

ENBRIDGE PIPELINES INC.
PROPOSED LINE 10 WESTOVER SEGMENT
REPLACEMENT PIPELINE PROJECT



Projection: NAD83 UTM Zone 17N
Imagery: Service Layer Credits: Source: Esri, DigitalGlobe, GeoEye, Earthstar Geographics, CNES/Airbus DS, USDA, USGS, AEX, Getmapping, Aerogrid, IGN, IGP, swisstopo, and the GIS User Community 2015; Pipeline Footprint Current to Rev 1.8; Roads, Indian Reserves, Railways, City/Town/Municipal Boundaries: Ontario Ministry of Natural Resources, 2015.

Although there is no reason to believe that there are any errors associated with the data used to generate this product or in the product itself, users of these data are advised that errors in the data may be present.

October 2016

664756

Mapped By: LA

Checked By: SL

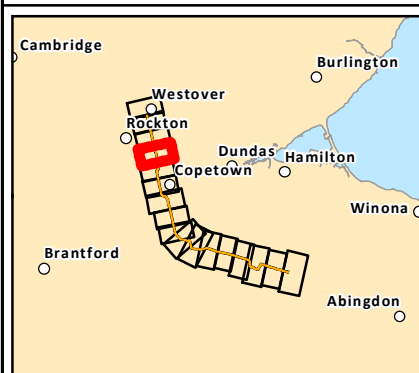

ENBRIDGE

FIGURE 1D

WOODLANDS DISTURBED IN THE VEGETATION REGIONAL STUDY AREA

**ENBRIDGE PIPELINES INC.
PROPOSED LINE 10 WESTOVER SEGMENT
REPLACEMENT PIPELINE PROJECT**

October 2016

664756

Mapped By: LA

Checked By: SL

ch2m.

Imagery: Service Layer Credits: Source: Esri, DigitalGlobe, GeoEye, Earthstar Geographics, CNES/Airbus DS, USDA, USGS, AEX, Getmapping, Aerogrid, IGN, IGP, swisstopo, and the GIS User Community 2015; Pipeline Footprint Current to Rev 1.8; Roads, Indian Reserves, Railways, City/Town/Municipal Boundaries: Ontario Ministry of Natural Resources, 2015.

Although there is no reason to believe that there are any errors associated with the data used to generate this product or in the product itself, users of these data are advised that errors in the data may be present.

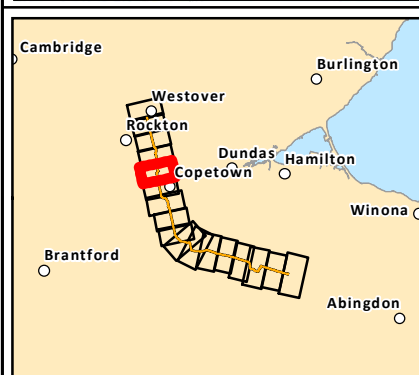


FIGURE 1E

**WOODLANDS DISTURBED IN THE VEGETATION
REGIONAL STUDY AREA**

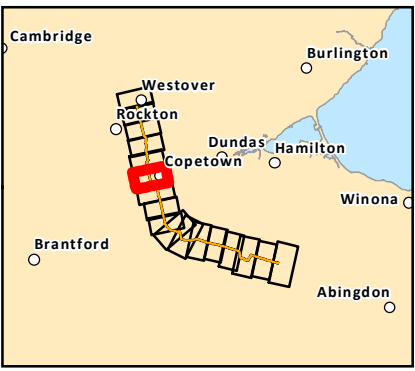
**ENBRIDGE PIPELINES INC.
PROPOSED LINE 10 WESTOVER SEGMENT
REPLACEMENT PIPELINE PROJECT**

October 2016	664756
Mapped By: LA	Checked By: SL

ch2m. hill

Imagery: Service Layer Credits: Source: Esri, DigitalGlobe, GeoEye, Earthstar Geographics, CNES/Airbus DS, USDA, USGS, AEX, Getmapping, Aerogrid, IGN, IGP, swisstopo, and the GIS User Community 2015; Pipeline Footprint Current to Rev 1.8; Roads, Indian Reserves, Railways, City/Town/Municipal Boundaries: Ontario Ministry of Natural Resources, 2015.

Although there is no reason to believe that there are any errors associated with the data used to generate this product or in the product itself, users of these data are advised that errors in the data may be present.



- | | |
|---------------------|--|
| ○ Kilometre Post | Line 10 Replacement Pipeline Footprint |
| Woodland | Road |
| Disturbed Woodlands | Access/Resource |
| Vegetation RSA | Railway |



SCALE: 1:12,000
0 200 m
(All Locations Approximate)

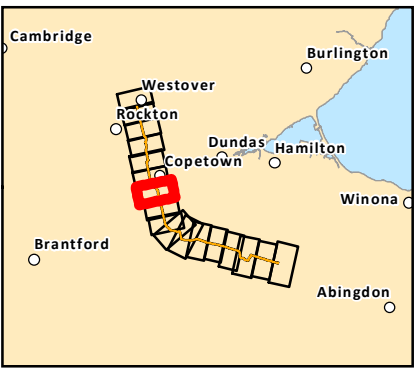
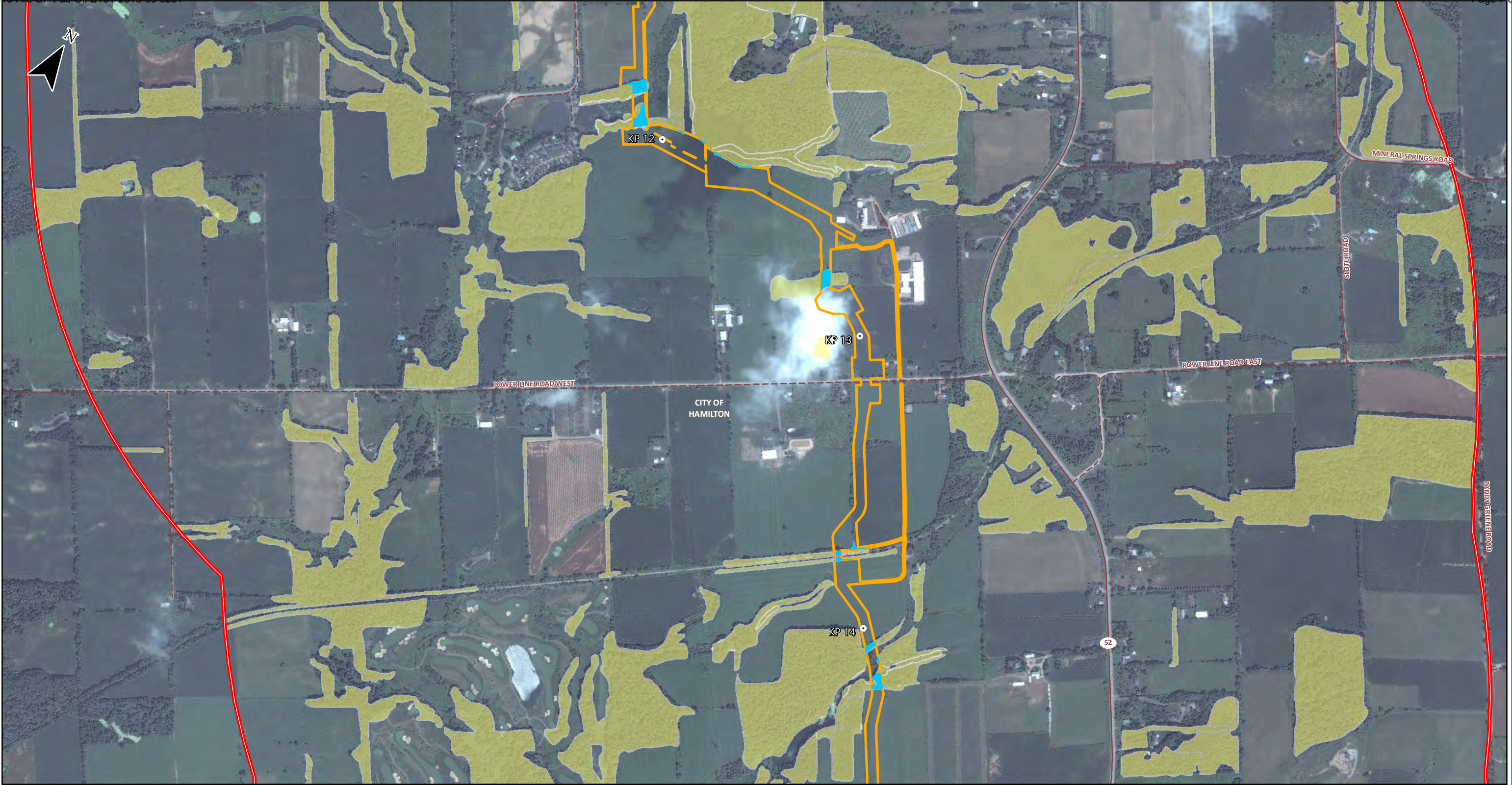
FIGURE 1F
WOODLANDS DISTURBED IN THE VEGETATION REGIONAL STUDY AREA
ENBRIDGE PIPELINES INC.
PROPOSED LINE 10 WESTOVER SEGMENT REPLACEMENT PIPELINE PROJECT



Projection: NAD83 UTM Zone 17N
Imagery: Service Layer Credits: Source: Esri, DigitalGlobe, GeoEye, Earthstar Geographics, CNES/Airbus DS, USDA, USGS, AEX, Getmapping, Aerogrid, IGN, IGP, swisstopo, and the GIS User Community 2015; Pipeline Footprint Current to Rev 1.8; Roads, Indian Reserves, Railways, City/Town/Municipal Boundaries: Ontario Ministry of Natural Resources, 2015.

Although there is no reason to believe that there are any errors associated with the data used to generate this product or in the product itself, users of these data are advised that errors in the data may be present.

October 2016	664756
Mapped By: LA	Checked By: SL



- Kilometre Post

Woodland

Disturbed Woodlands

Vegetation RSA

Line 10 Replacement Pipeline Footprint

Road

Access/Resource
-
- SCALE: 1:13,000
0 200 m
(All Locations Approximate)
- FIGURE 1G**
WOODLANDS DISTURBED IN THE VEGETATION
REGIONAL STUDY AREA
ENBRIDGE PIPELINES INC.
PROPOSED LINE 10 WESTOVER SEGMENT
REPLACEMENT PIPELINE PROJECT
-
- Imagery: Service Layer Credits: Source: Esri, DigitalGlobe, GeoEye, Earthstar Geographics, CNES/Airbus DS, USDA, USGS, AEX, Getmapping, Aerogrid, IGN, IGP, swisstopo, and the GIS User Community 2015; Pipeline Footprint Current to Rev 1.8; Roads, Indian Reserves, Railways, City/Town/Municipal Boundaries: Ontario Ministry of Natural Resources, 2015.
- Although there is no reason to believe that there are any errors associated with the data used to generate this product or in the product itself, users of these data are advised that errors in the data may be present.
- | | |
|---------------|----------------|
| October 2016 | 664756 |
| Mapped By: LA | Checked By: SL |
- \\ch2mhill\common\Shares\CNR\GIS_Proj2\VECA\664756_EN_Line10\MapFiles\HearingPrep\Rev_1_8\Fig1_WoodedArea_VegRSA_Disturbed.mxd


ENBRIDGE

FIGURE 1H

WOODLANDS DISTURBED IN THE VEGETATION REGIONAL STUDY AREA

**ENBRIDGE PIPELINES INC.
PROPOSED LINE 10 WESTOVER SEGMENT
REPLACEMENT PIPELINE PROJECT**

October 2016

664756

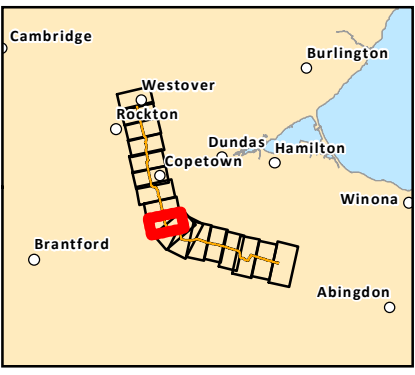
Mapped By: LA

Checked By: SL

ch2m. hill

Imagery: Service Layer Credits: Source: Esri, DigitalGlobe, GeoEye, Earthstar Geographics, CNES/Airbus DS, USDA, USGS, AEX, Getmapping, Aerogrid, IGN, IGP, swisstopo, and the GIS User Community 2015; Pipeline Footprint Current to Rev 1.8; Roads, Indian Reserves, Railways, City/Town/Municipal Boundaries: Ontario Ministry of Natural Resources, 2015.

Although there is no reason to believe that there are any errors associated with the data used to generate this product or in the product itself, users of these data are advised that errors in the data may be present.



- Kilometre Post

Woodland

Disturbed Woodlands

Vegetation RSA

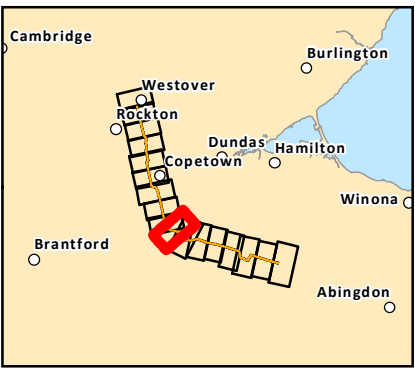
Line 10 Replacement Pipeline Footprint

Highway/Freeway

Road

Access/Resource
-
- SCALE: 1:12,000
0 200 m
(All Locations Approximate)
- FIGURE 11
WOODLANDS DISTURBED IN THE VEGETATION
REGIONAL STUDY AREA

ENBRIDGE PIPELINES INC.
PROPOSED LINE 10 WESTOVER SEGMENT
REPLACEMENT PIPELINE PROJECT
-
- Projection: NAD83 UTM Zone 17N
Imagery: Service Layer Credits: Source: Esri, DigitalGlobe, GeoEye, Earthstar Geographics, CNES/Airbus DS, USDA, USGS, AEX, Getmapping, Aerogrid, IGN, IGP, swisstopo, and the GIS User Community 2015; Pipeline Footprint Current to Rev 1.8; Roads, Indian Reserves, Railways, City/Town/Municipal Boundaries: Ontario Ministry of Natural Resources, 2015.
- Although there is no reason to believe that there are any errors associated with the data used to generate this product or in the product itself, users of these data are advised that errors in the data may be present.
- | | |
|---------------|----------------|
| October 2016 | 664756 |
| Mapped By: LA | Checked By: SL |
- \\ch2mhill\common\Shares\CNR\GIS_Proj2\VECA\664756_EN_Line10\MapFiles\HearingPrep\Rev_1_8\Fig1_WoodedArea_VegRSA_Disturbed.mxd



- Kilometre Post

Woodland

Disturbed Woodlands

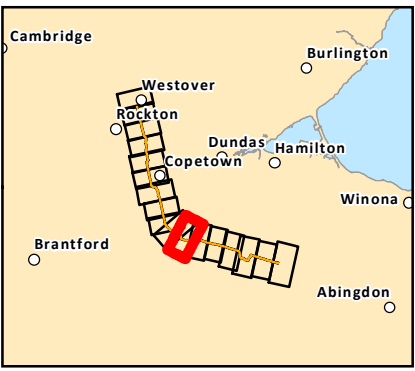
Vegetation RSA

Line 10 Replacement Pipeline Footprint

Road

Access/Resource
-
- SCALE: 1:14,000
0 200 m
(All Locations Approximate)
- FIGURE 1J
WOODLANDS DISTURBED IN THE VEGETATION
REGIONAL STUDY AREA

ENBRIDGE PIPELINES INC.
PROPOSED LINE 10 WESTOVER SEGMENT
REPLACEMENT PIPELINE PROJECT
-
- Projection: NAD83 UTM Zone 17N
Imagery: Service Layer Credits: Source: Esri, DigitalGlobe, GeoEye, Earthstar Geographics, CNES/Airbus DS, USDA, USGS, AEX, Getmapping, Aerogrid, IGN, IGP, swisstopo, and the GIS User Community 2015; Pipeline Footprint Current to Rev 1.8; Roads, Indian Reserves, Railways, City/Town/Municipal Boundaries: Ontario Ministry of Natural Resources, 2015.
- Although there is no reason to believe that there are any errors associated with the data used to generate this product or in the product itself, users of these data are advised that errors in the data may be present.
- | | |
|---------------|----------------|
| October 2016 | 664756 |
| Mapped By: LA | Checked By: SL |
- \\ch2mhill\common\Shares\CNR\GIS_Proj2\VECA\664756_EN_Line10\MapFiles\HearingPrep\Rev_1_8\Fig1_WoodedArea_VegRSA_Disturbed.mxd



- Kilometre Post

Woodland

Disturbed Woodlands

Vegetation RSA

Line 10 Replacement Pipeline Footprint

Road

Access/Resource
- SCALE: 1:14,000

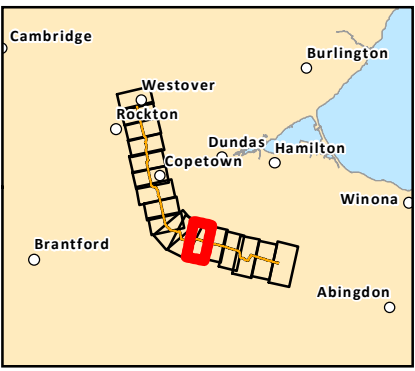
0

200

m

(All Locations Approximate)
- | | |
|---|----------------|
| FIGURE 1K
WOODLANDS DISTURBED IN THE VEGETATION
REGIONAL STUDY AREA

ENBRIDGE PIPELINES INC.
PROPOSED LINE 10 WESTOVER SEGMENT
REPLACEMENT PIPELINE PROJECT | |
| October 2016 | 664756 |
| Mapped By: LA | Checked By: SL |
-
- Projection: NAD83 UTM Zone 17N
Imagery: Service Layer Credits: Source: Esri, DigitalGlobe, GeoEye, Earthstar Geographics, CNES/Airbus DS, USDA, USGS, AEX, Getmapping, Aerogrid, IGN, IGP, swisstopo, and the GIS User Community 2015; Pipeline Footprint Current to Rev 1.8; Roads, Indian Reserves, Railways, City/Town/Municipal Boundaries: Ontario Ministry of Natural Resources, 2015.
- Although there is no reason to believe that there are any errors associated with the data used to generate this product or in the product itself, users of these data are advised that errors in the data may be present.
- \\ch2mhill\common\Shares\CNR\GIS_Proj2\VECA\664756_EN_Line10\MapFiles\HearingPrep\Rev_1_8\Fig1_WoodedArea_VegRSA_Disturbed.mxd



- Kilometre Post

Woodland

Vegetation RSA

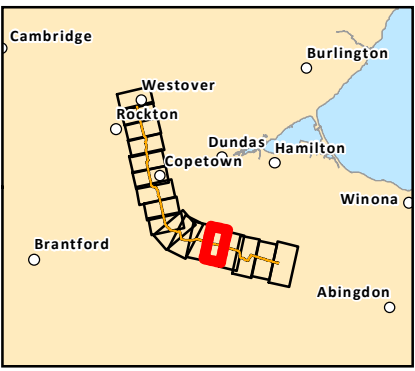
Line 10 Replacement Pipeline Footprint

Road

Access/Resource
- 

SCALE: 1:13,000

(All Locations Approximate)
- | FIGURE 1L
WOODLANDS DISTURBED IN THE VEGETATION
REGIONAL STUDY AREA | |
|--|----------------|
| ENBRIDGE PIPELINES INC.
PROPOSED LINE 10 WESTOVER SEGMENT
REPLACEMENT PIPELINE PROJECT | |
| October 2016 | 664756 |
| Mapped By: LA | Checked By: SL |
-
- Projection: NAD83 UTM Zone 17N
Imagery: Service Layer Credits: Source: Esri, DigitalGlobe, GeoEye, Earthstar Geographics, CNES/Airbus DS, USDA, USGS, AEX, Getmapping, Aerogrid, IGN, IGP, swisstopo, and the GIS User Community 2015; Pipeline Footprint Current to Rev 1.8; Roads, Indian Reserves, Railways, City/Town/Municipal Boundaries: Ontario Ministry of Natural Resources, 2015.
- Although there is no reason to believe that there are any errors associated with the data used to generate this product or in the product itself, users of these data are advised that errors in the data may be present.
- \\ch2mhill\common\Shares\CNR\GIS_Proj2\VECA\664756_EN_Line10\MapFiles\HearingPrep\Rev_1_8\Fig1_WoodedArea_VegRSA_Disturbed.mxd



- Kilometre Post

Woodland

Disturbed Woodlands

Vegetation RSA

Line 10 Replacement Pipeline Footprint

Highway/Freeway

Road

Access/Resource
- SCALE: 1:12,000

0

200

m

(All Locations Approximate)
- FIGURE 1M

WOODLANDS DISTURBED IN THE VEGETATION REGIONAL STUDY AREA

ENBRIDGE PIPELINES INC.
PROPOSED LINE 10 WESTOVER SEGMENT REPLACEMENT PIPELINE PROJECT
-
- Projection: NAD83 UTM Zone 17N
Imagery: Service Layer Credits: Source: Esri, DigitalGlobe, GeoEye, Earthstar Geographics, CNES/Airbus DS, USDA, USGS, AEX, Getmapping, Aerogrid, IGN, IGP, swisstopo, and the GIS User Community 2015; Pipeline Footprint Current to Rev 1.8; Roads, Indian Reserves, Railways, City/Town/Municipal Boundaries: Ontario Ministry of Natural Resources, 2015.
- Although there is no reason to believe that there are any errors associated with the data used to generate this product or in the product itself, users of these data are advised that errors in the data may be present.
- | | |
|---------------|----------------|
| October 2016 | 664756 |
| Mapped By: LA | Checked By: SL |
- \\ch2mhill\common\Shares\CNR\GIS_Proj2\VECA\664756_EN_Line10\MapFiles\HearingPrep\Rev_1_8\Fig1_WoodedArea_VegRSA_Disturbed.mxd

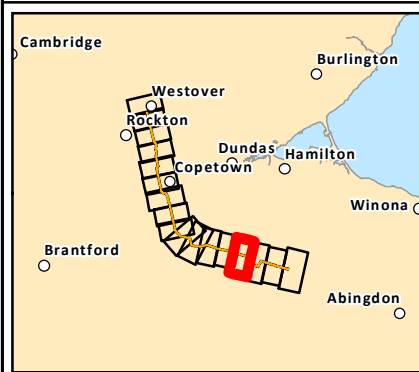


FIGURE 1N

**WOODLANDS DISTURBED IN THE VEGETATION
REGIONAL STUDY AREA**

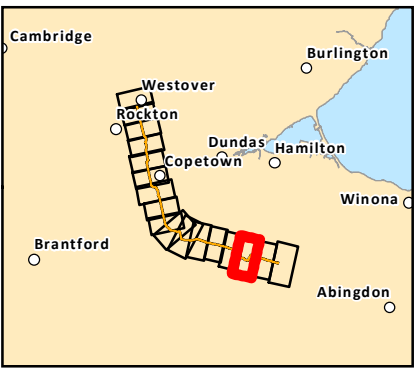
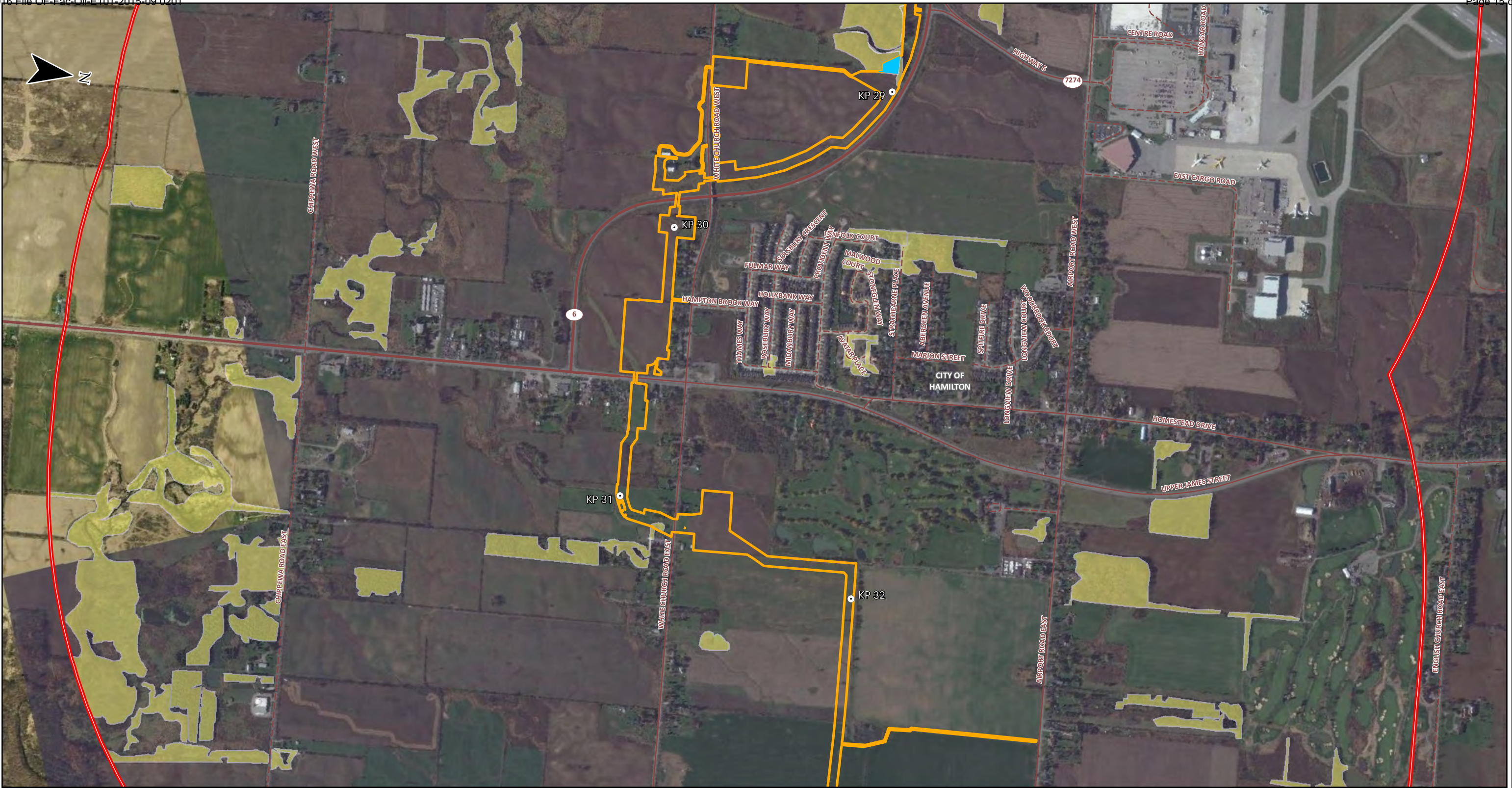
**ENBRIDGE PIPELINES INC.
PROPOSED LINE 10 WESTOVER SEGMENT
REPLACEMENT PIPELINE PROJECT**

October 2016	664756
Mapped By: LA	Checked By: SL

ch2m.

Imagery: Service Layer Credits: Source: Esri, DigitalGlobe, GeoEye, Earthstar Geographics, CNES/Airbus DS, USDA, USGS, AEX, Getmapping, Aerogrid, IGN, IGP, swisstopo, and the GIS User Community 2015; Pipeline Footprint Current to Rev 1.8; Roads, Indian Reserves, Railways, City/Town/Municipal Boundaries: Ontario Ministry of Natural Resources, 2015.

Although there is no reason to believe that there are any errors associated with the data used to generate this product or in the product itself, users of these data are advised that errors in the data may be present.



- Kilometre Post

Woodland

Disturbed Woodlands

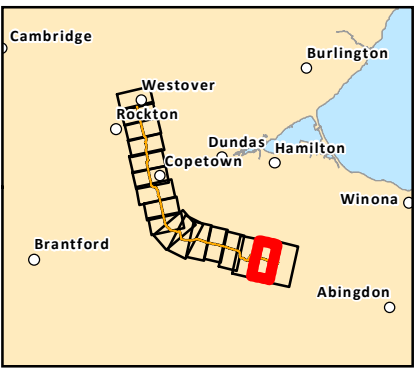
Vegetation RSA

Line 10 Replacement Pipeline Footprint

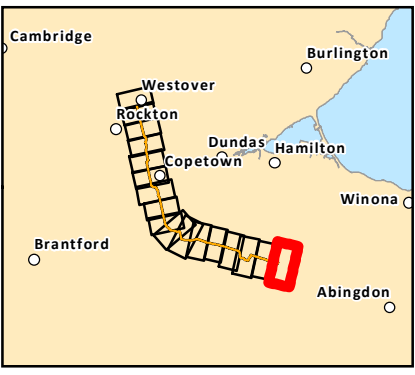
Highway/Freeway

Road

Access/Resource
- SCALE: 1:14,000
0 200 m
(All Locations Approximate)
- | FIGURE 10
WOODLANDS DISTURBED IN THE VEGETATION
REGIONAL STUDY AREA | |
|--|----------------|
| ENBRIDGE PIPELINES INC.
PROPOSED LINE 10 WESTOVER SEGMENT
REPLACEMENT PIPELINE PROJECT | |
| October 2016 | 664756 |
| Mapped By: LA | Checked By: SL |
-
- Projection: NAD83 UTM Zone 17N
Imagery: Service Layer Credits: Source: Esri, DigitalGlobe, GeoEye, Earthstar Geographics, CNES/Airbus DS, USDA, USGS, AEX, Getmapping, Aerogrid, IGN, IGP, swisstopo, and the GIS User Community 2015; Pipeline Footprint Current to Rev 1.8; Roads, Indian Reserves, Railways, City/Town/Municipal Boundaries: Ontario Ministry of Natural Resources, 2015.
- Although there is no reason to believe that there are any errors associated with the data used to generate this product or in the product itself, users of these data are advised that errors in the data may be present.
- \\ch2mhill\common\Shares\CNR\GIS_Proj2\VECA\664756_EN_Line10\MapFiles\HearingPrep\Rev_1_8\Fig1_WoodedArea_VegRSA_Disturbed.mxd



	Imagery: Service Layer Credits: Source: Esri, DigitalGlobe, GeoEye, Earthstar Geographics, CNES/Airbus DS, USDA, USGS, AEX, Getmapping, Aerogrid, IGN, IGP, swisstopo, and the GIS User Community 2015; Pipeline Footprint Current to Rev 1.8; Roads, Indian Reserves, Railways, City/Town/Municipal Boundaries: Ontario Ministry of Natural Resources, 2015. <small>Although there is no reason to believe that there are any errors associated with the data used to generate this product or in the product itself, users of these data are advised that errors in the data may be present.</small>			FIGURE 1P WOODLANDS DISTURBED IN THE VEGETATION REGIONAL STUDY AREA ENBRIDGE PIPELINES INC. PROPOSED LINE 10 WESTOVER SEGMENT REPLACEMENT PIPELINE PROJECT	
		SCALE: 1:13,000 (All Locations Approximate)		October 2016	664756
				Mapped By: LA	Checked By: SL



- | | |
|---------------------|--|
| Kilometre Post | Line 10 Replacement Pipeline Footprint |
| Woodland | Road |
| Disturbed Woodlands | Access/Resource |
| Vegetation RSA | Enbridge Facility |



SCALE: 1:15,000
0 200 m
(All Locations Approximate)

FIGURE 1Q
WOODLANDS DISTURBED IN THE VEGETATION REGIONAL STUDY AREA
ENBRIDGE PIPELINES INC.
PROPOSED LINE 10 WESTOVER SEGMENT REPLACEMENT PIPELINE PROJECT



Projection: NAD83 UTM Zone 17N
Imagery: Service Layer Credits: Source: Esri, DigitalGlobe, GeoEye, Earthstar Geographics, CNES/Airbus DS, USDA, USGS, AEX, Getmapping, Aerogrid, IGN, IGP, swisstopo, and the GIS User Community 2015; Pipeline Footprint Current to Rev 1.8; Roads, Indian Reserves, Railways, City/Town/Municipal Boundaries: Ontario Ministry of Natural Resources, 2015.

Although there is no reason to believe that there are any errors associated with the data used to generate this product or in the product itself, users of these data are advised that errors in the data may be present.

October 2016	664756
Mapped By: LA	Checked By: SL